

HYMER

HYMER Original Parts

A PERFECT MATCH!



HYMER ORIGINAL PARTS

Thank you for your interest in our range of Original Accessories for HYMER motorhomes and HYMER camper vans. One of the goals of our corporate strategy is to provide our customers with a comprehensive, top-quality service. Which is why we also think beyond the vehicle purchase itself. We always offer our customers solutions with added value that combine an excellent fit with harmonious design – and always, of course, in the renowned HYMER quality.

NEW PRODUCTS IN OUR 2021 ACCESSORIES RANGE:

- The all-new HYMER Backrack+
- The HYMER clearliQ travel water filter
- The exclusive HYMER E-Bike charger

HOW CAN I ORDER?

WHERE CAN I FIND THE FULL PRODUCT RANGE?

HYMER Original Accessories are not available direct from the factory, but are instead ordered and retrofitted exclusively via your HYMER dealer. You can find the full range of accessories online at www.hymer-original-zubehör.com

FORGOT TO ADD SOME OPTIONAL EXTRAS?

No problem – many optional extras are now also available as attractive retrofit packages.



CONTENTS

INNOVATIONS

HYMER Backrack+	4 – 5
HYMER Connect	6
HYMER sound system	7
Park Assist	7
HYMER magnetic refrigerator front	7
HYMER clearliQ travel water filter powered by Grünbeck	8
Inverter and photovoltaics retrofit package	9

SELF-SUFFICIENCY

HYMER Smart-Battery-System	10 – 11
----------------------------	---------

SAFETY

Anti-burglary devices and equipment	12 – 13
-------------------------------------	---------

ACCESSORIES

Suction cups and kitchen rail/insulation	14 – 15
Navigation and multimedia	16 – 17
HYMER Bike Carrier and	
HYMER E-Bike Charger	18 – 19
HYMER dog accessories	20
HYMER storage box and	
E-Connect promotion package	21
Interior (e.g. seat covers, carpets)	22
Camper Van accessories (e.g. insulation)	23
Sleeping accessories	24 – 25

FASHION

HYMER Lifestyle Collection	26 – 27
----------------------------	---------

CARRIED TO THE ENDS OF THE EARTH.



SCAN THE CODE FOR MORE INFO ON THE HYMER BACKRACK+.

The HYMER Backrack+ expands your travel options.



Innovative, individual, modular. The Backrack+ opens up a new world of transport thanks to a wide range of components – and makes your camper van stand out from the crowd. Whether you want to transport bicycles, e-bikes, a spare wheel or a practical aluminium box, the right rack accessory can be fitted in no time at all. Further components (e.g. ski/snowboard carriers) are already being developed and the versatility of the system is being continuously expanded. The Backrack+ raises the bar in terms of both design and functionality.

FURTHER HIGHLIGHTS:

- Base support <10 kg
- Load capacity 80 kg
- Growing range of compatible products
- For all camper vans on a FIAT Ducato basis

RACK ACCESSORIES AVAILABLE AT LAUNCH:

- HYMER Bike Carrier Swing (can carry up to 2 e-bikes)
- HYMER Bike Carrier Shuttle (can carry up to 2 e-bikes)
- HYMER Wheel Holder
- HYMER Mini Rack
- HYMER Number and Light Bar



THE FUTURE IS IN YOUR HANDS.

HYMER Connect: the first smart ecosystem, retrofittable for all HYMER B-Class MasterLine vehicles.

HYMER Connect is a unique, digital ecosystem that turns your HYMER into a smart motorhome. It combines access to vehicle information with control of the living-area functions – via the convenient and intuitive app, whether nearby via Bluetooth or remotely over the mobile network. The HYMER Connect app comes with pre-installed scenarios that you can, of course, customise to create your personal feel-good atmosphere. Your fully connected HYMER will thus turn every trip into something special. If you want all the benefits of the HYMER Connect system for your own HYMER B-Class MasterLine, you can simply have it retrofitted (possible for model years 2020 and 2021).

RETROFIT AND EXPAND:

• SOLAR INSTALLATION

All solar installations can be retrofitted (depending on the solar controller).

• SAT SYSTEM

Only one of the following SAT systems can be retrofitted: Ten Haaft Oyster 80 single, Ten Haaft Oyster 80 twin, Ten Haaft Cytrax DX Vision with Feature Box.

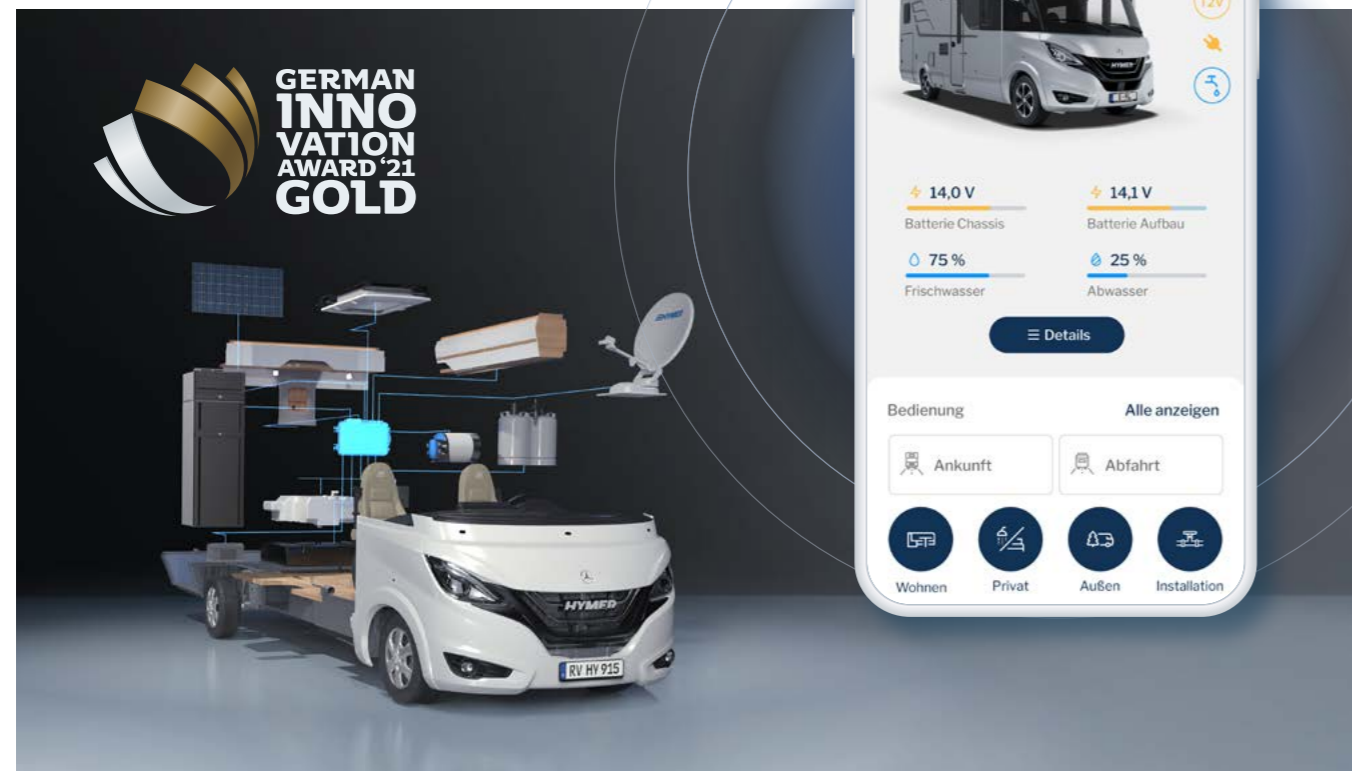
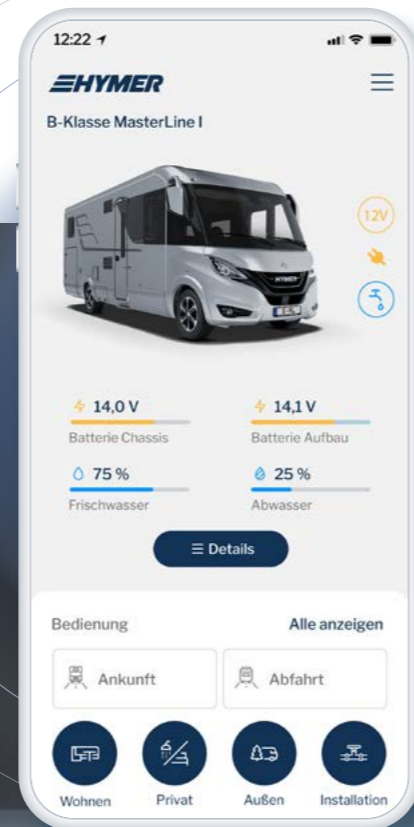
• AIR CONDITIONING

The air conditioning add-on package is only compatible with the Truma Aventa Comfort air conditioning system.

Please contact your dealer for the article numbers corresponding to the respective retrofit models.



YOU WILL FIND ALL KEY INFO ABOUT RETROFITTING HYMER CONNECT HERE.



HYMER SOUND SYSTEM

The HYMER sound system – powered by Jehnert – was specially developed for the cab of the FIAT Ducato and is optimally adapted to its layout. With optimum timbre and tuned bass, the system provides a significant upgrade for greater enjoyment of music and speech. The plug-and-play system replaces the original speakers and provides the necessary wattage via its power amplifier.

SCOPE OF DELIVERY:

- 2 x bass/midrange driver
- 2 x tweeter
- Power amplifier including mounting bracket
- All necessary cable harnesses
- Insulation material

Article No. 3349144



PARK PILOT, REAR PARK ASSIST

Make reverse parking much easier and avoid collision damage to your motorhome. Four ultrasonic sensors detect any obstacles behind the motorhome and warn the driver via a sound signal that increases in volume. The intelligent parking system also includes a digital display (for distance measurement). It is thus optimally adapted to HYMER vehicles both visually and technically, making installation a breeze. Available for all motorhomes on a Mercedes-Benz chassis.

Contact your dealer for the article number corresponding to your vehicle model.



HYMER MAGNETIC REFRIGERATOR FRONT

Give your refrigerator an attractive design and additional functionality. The design of the magnetic fridge front blends in perfectly with all furniture finishes and is available to match all Thetford refrigerators. Suitable for self-assembly.

The fridge front includes 10 magnets in the HYMER design.

- Article No. 3349154 (1,425 x 395 mm)
- Article No. 3361095 (1,396 x 400 mm)
- Article No. 3356136 (871 x 399 mm)

DRINKING WATER – WHERE AND WHENEVER YOU NEED IT.

HYMER clearliQ travel water filter, powered by Grünbeck.



Turn your fresh water tank into a safe drinking water reservoir. The HYMER clearliQ travel water filter, powered by Grünbeck, reliably filters bacteria, chlorine and dirt (such as sand) out of tap water. It also removes any unpleasant odours/taste and discolouration from the water.



SCAN THE CODE TO LEARN MORE ABOUT THE HYMER CLEARLIQ TRAVEL WATER FILTER, POWERED BY GRÜNBECK.

Article No. 3345951



Installation in the storage compartment of the SLC chassis



Easy cartridge replacement without tools



Verified by the bifa environmental institute Augsburg



INVERTER RETROFIT PACKAGE FOR HYMER B-CLASS MASTERLINE AND B-CLASS MODERNCOMFORT

Exclusive inverter retrofit package (1,800 W) – perfectly matched to the B-Class MasterLine and B-Class ModernComfort model range.

Article No. 8501980



PHOTOVOLTAIC RETROFIT PACKAGE FOR HYMER B-CLASS MASTERLINE AND B-CLASS MODERNCOMFORT

Exclusive photovoltaic retrofit package (2 x 90 W) – perfectly matched to the B-Class MasterLine and B-Class ModernComfort model range.

Article No. 8501981

EVEN GREATER AUTONOMY WHEN TRAVELLING.

The revolutionary HYMER Smart-Battery-System.

There's no longer any reason to leave the perfect spot too soon. Now you can enjoy extra freedom thanks to a self-sufficient, on-board power supply system. The Smart-Battery-System combines the superb performance of lithium batteries with the low costs of conventional lead batteries. The result: considerably heightened performance, a significant increase in self-sufficiency, an enormous increase in the lifespan of the entire system and lower costs for the overall service life.



INCREASED SELF-SUFFICIENCY



WINTER-PROOF SYSTEM THANKS TO INTEGRATED HEATER



REDUCED WEIGHT WITH SAME/INCREASED CAPACITY



ALLOWS MODULAR EXPANSION TO THE DESIRED CAPACITY



MORE INFORMATION ABOUT THE HYMER SMART-BATTERY-SYSTEM IS AVAILABLE HERE.



All advantages at a glance.

Exclusive product: Perfectly adapted for HYMER vehicles.

Improved safety: The HY-Tec battery is a lithium-iron-phosphate battery (LiFePO4). This means that overheating or combustion is not possible!

Improved economy: A relatively inexpensive introduction to the world of LI batteries as the existing AGM battery can continue to be used.

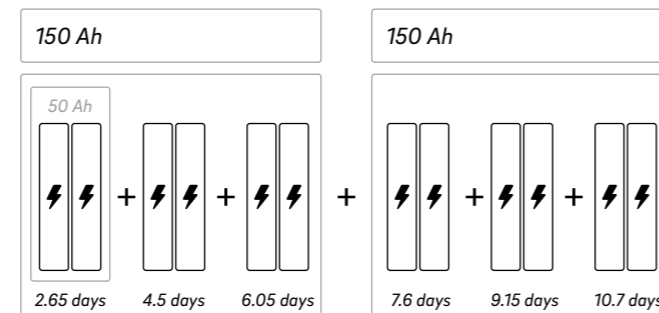
Certified quality: The HY-Tec LI battery is ECE-approved has been tested by the TÜV for temperature fluctuations and vibrations.

Made in Germany: The HY-Tec LI battery is manufactured in Germany.

3-year warranty

Modular system.

Simple, step-by-step expansion of the lithium units.



Easily transfer the components when changing vehicles.

Your retrofitting options at a glance.

The exclusive retrofit systems from HYMER Originals Parts will let you enjoy even better performance in the future. Retrofit the system in your vehicle quickly and easily – and enjoy your next holiday without a care in the world.



Article No. 3316921 – 2-block 50 Ah LI battery



Article No. 3316923 – 6-block 150 Ah LI battery (basic retrofit kit)
Article No. 3316924 – 6-block 150 Ah LI battery (expansion pack)



SAFE MERCEDES

As the saying goes: "Opportunity makes the thief". By ensuring that no valuables are left visible or only partly hidden in your motorhome, you can eliminate this opportunity. With the safe for the passenger seat console for all semi-integrated models and camper vans on a Mercedes Sprinter chassis, you can rest assured that your valuables are well protected.

THE KEY BENEFITS AT A GLANCE:

- Space for essential items like your wallet, credit cards, jewellery, tablets (up to 10"), etc.
- 3-bolt security lock – Made in Germany
- Sturdy steel casing
- Rattle-free – thanks to the internal design with anti-slip mats on the base and side walls
- Easy installation in a matter of minutes
- Blends in seamlessly with the interior
- **Weight:** 2.5 kg

Camper Van

Dimensions (W x H x D): 230 x 130 x 310 mm
Article No. 3243439

Semi-integrated

Dimensions (W x H x D): 230 x 130 x 135 mm
Article No. 3274053



HYMER PASSENGER DOOR SAFE FOR FIAT DUCATO

The specially developed safe with its unique bolts is not recognisable as such from the outside and provides protection against theft. Simple to install, the safe is positioned behind the original equipment map compartment so there are no awkward protruding edges. It has enough space for all the essential items you need to bring with you on holiday, such as credit cards, mobile phones, identification documents, cash, jewellery and even notebooks with screens up to 11", etc. The lid is also in a low position with no space for leverage to protect it from being forced open. Made in Germany.

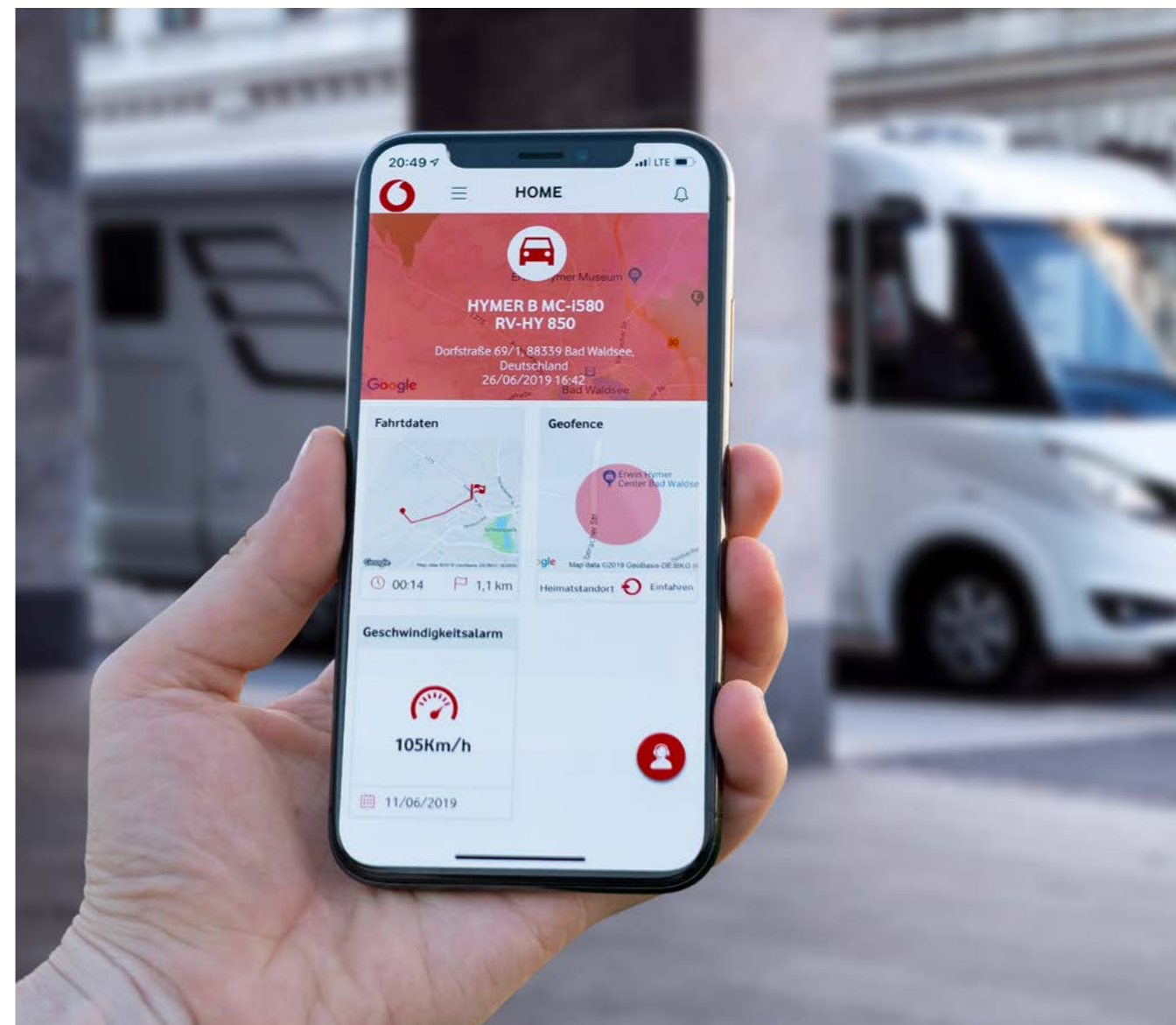
- **Material:** steel, body 2 mm, door 5 mm
- **Weight:** approx. 6 kg
- VdS-certified 3-bolt lock

Model year 2007 – 2019:

Dimensions (W x H x D): 26.5 x 21 (16) x 10.5 cm
Article No. 2862561

Model year 2020 – 2021:

Dimensions (W x H x D): 24 x 17 x 9.5 cm
Article No. 3191310



HYMER PROTECT & CONNECT POWERED BY VODAFONE AUTOMOTIVE

Effectively safeguard your vehicle against theft – thanks in part to the Europe-wide service network of our partner Vodafone. In case of theft, alarm centres in 44 countries which share information with local police stations will ensure that your vehicle is located and recovered. These alarm centres can be contacted around the clock and will assist you when you need urgent help. However, the "My Connected Car" app also contains many other interesting features, such as geofence management and the "Car Finder", which will reliably lead you to your vehicle's location.

ATTENTION:

Our theft location and vehicle monitoring services are only available in Germany and Austria. For this reason, the service can only be activated by customers from these countries.

Article No. 3061688

HYMER VEHICLE DEFENCE POWERED BY VODAFONE AUTOMOTIVE

Simply install, activate and retrieve! Use this compact, low-cost solution to locate your stolen vehicle. HYMER Vehicle Defence features a dual GPS system that reliably tracks down every vehicle. This battery-powered system can be easily installed in any number of places in or on the vehicle. If required, it can also be re-fitted to a different vehicle with ease. If the vehicle is reported as stolen to the alarm centre, your system will be located the recovery procedure initiated. The retrieval of your HYMER vehicle will always be handled by the local police authorities, with whom the alarm centres are constantly sharing information.

ATTENTION:

Our theft location and vehicle monitoring services are only available in Germany and Austria. For this reason, the service can only be activated by customers from these countries.

Article No. 3061748



HYMER BICYCLE RACK WITH SUCTION CUP



Developed exclusively for HYMER, this bicycle rack can be attached to any smooth surface. It is designed as a quick and easy way to secure bicycles (especially those without stands) to the vehicle, as there isn't always a handy nearby object to attach them to. If fitted correctly, the suction cup can be used for many days without having to re-attach it.

- Exceptional holding force
- 45 cm holding bracket with quick release skewer
- 100% stainless steel – 100% weatherproof

Article No. 2650267



HYMER AWNING HOLDER WITH EYELET



The HYMER awning holder is a useful everyday aid and can be attached to any smooth surface. It is suitable for a wide range of uses, e.g. for attaching awnings or securing a pet's lead. If fitted correctly, the suction cup can be used for many days at a time without requiring re-attachment.

- Very easy to attach
- Exceptional holding force of 25 kg
- 100% stainless steel – 100% weatherproof

Article No. 2684848



HYMER MINI SUCTION CUP RANGE



The mini suction cup range from HYMER is characterised by the usual tried-and-tested quality, and now offers even more functions. As always, the entire housing is made of stainless steel and is engraved with the HYMER logo. Its high degree of attachment flexibility makes this item a must-have.

- Easy to attach
- Exceptional holding force of 8 kg
- 100% stainless steel – 100% weatherproof

Article No. 2646709 – HYMER universal holder/shower head holder

Article No. 2644586 – HYMER-towel rail

Article No. 2641868 – HYMER kitchen roll holder

KITCHEN RAIL



The rail, which is factory installed in the HYMER kitchen, can be used and expanded in a variety of different ways with the following original accessories.

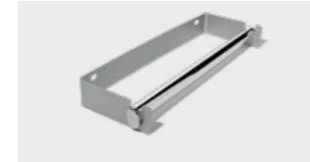


HANGING HOOKS

With these high-quality and ultra-sturdy metal hooks you can hang your kitchen utensils such as potholders and tea towels at your desired position on the rail.

- Contents: set of 3 metal hooks
- Design: matt silver
- Material: metal

Article No. 3111927



PAPER TOWEL HOLDER

The paper towel holder features adjustable mounting to ensure your kitchen roll is always close to hand. To mount, simply twist in each of the fixtures on the left and the right.

- Length: 29 cm
- Material: aluminium

Article No. 3105891



SPICE RACK

With the aid of the rubber retaining band your spices will remain securely stowed in the rack, even when the vehicle is on the move. The rack can be quickly and easily mounted by twisting both ends into the rail.

- Design: matt silver
- Material: aluminium

Article No. 3106146



COFFEE POD HOLDER

The pod holder can be adjustably mounted to the rail and provides space for up to 6 coffee pods. Of course, there is plenty of space to mount multiple pod holders side by side – an option that coffee lovers will appreciate.

- Material: aluminium / Plexiglas

Article No. 3106158



HYMER FRONT WINDSCREEN INSULATION MAT SET



This set includes the right/left piping rails for the insulating mat, as well as the cover caps. This high-quality insulation mat combines excellent durability with easy installation. **Outer material** PVC with fabric inlay (no film!). The material remains flexible at temperatures as low as -30 °C. **Packed size (W x H x D):** 75 x 28 x 28 cm, **weight:** approx. 4 kg.

Contact your dealer for the article number corresponding to your vehicle model.



SUNBLIND



Opaque PVC-coated textile fabric – provides privacy and protection from direct sunlight and heat, while simultaneously allowing an unobstructed view from the inside. A perfect fit is guaranteed and installation is a breeze – available for integrated and semi-integrated motorhomes. For integrated vehicles, a piping rail on the right side is necessary. (Not included in the scope of delivery.)

Contact your dealer for the article number corresponding to your vehicle model.

ALWAYS ON THE RIGHT TRACK. THANKS TO NAVIGATION TECHNOLOGY FROM HYMER.

While on the road, you want to avoid unwanted detours and ensure you are always in control. This is no problem, thanks to the wide-ranging multimedia options from HYMER Original Parts.



DISCOVER OUR MULTIMEDIA
WORLD. PERFECTLY MATCHED
TO YOUR VEHICLE.



HYMER DUAL-LENS REVERSING CAMERA 2.0



The HYMER dual-lens reversing camera 2.0 combines camera technology and the third brake light in one housing. The high-quality camera offers an excellent field of vision both at a distance and directly behind your vehicle.

- Perfect night vision
- Special nano-sealed lenses
- 170° field of view
- Integrated microphone as standard

Article No. 2968936



HYMER CAMPER VAN/HYMERCAR REVERSING CAMERA



The HYMER Camper Van / HYMERCAR reversing camera is elegantly integrated into the third brake light of the Fiat Ducato. This creates a very pleasing design and makes fitting the camera a simple process. Its main features are:

- Compact, high-resolution camera – integrated in the 3rd brake light
- Detailed image resolution with high contrast, even in twilight conditions
- Manually adjustable camera angle for preferred field of vision
- Housing made of injection-moulded plastic with stainless steel fixing bolts
- Note: Scope of delivery does not include brake light

Article No. 8501617



HYMER NAVIGATION DEVICES



The HYMER navigation devices are fully equipped DAB+ infotainment systems for all motorhomes and camper vans based on a Fiat Ducato or Mercedes Sprinter chassis. They integrate perfectly into each Hymer vehicle. The devices offer certified compatibility with Apple CarPlay and Google Android for easy smartphone use in the cockpit. Thanks to FreeOn-Tour integration, your planned routes can be easily transferred to the navigation device via the FreeOn-Tour app.

- Perfect night vision
- Special nano-sealed lenses
- 170° field of view
- Integrated microphone as standard
- Optional 3-year or 7-year sat-nav map available

NAVIGATION DEVICE FOR MERCEDES-BASED MODELS

Only available in conjunction with MB radio preparation.

NAVIGATION DEVICE FOR FIAT-BASED MODELS

Contact your dealer for the article number corresponding to your vehicle model.



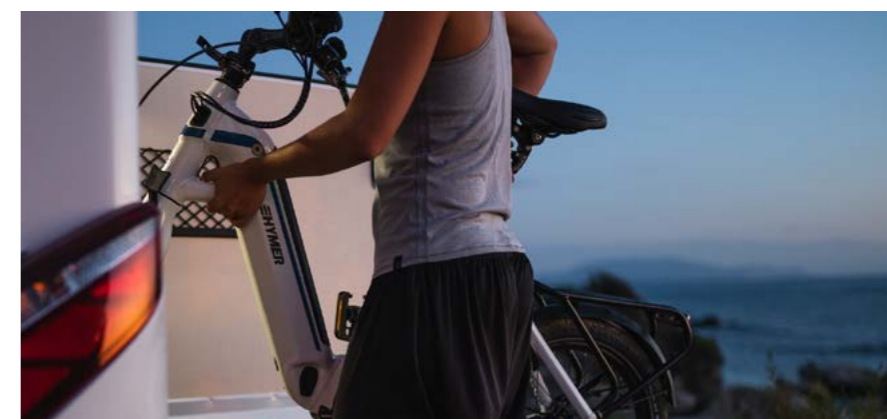
THE PERFECT UPGRADE: MULTIMEDIA PACKAGE INCLUDING REVERSING CAMERA



Enjoy the comfort and features of the new HYMER multimedia package, which consists of the navigation device and the corresponding reversing camera integrated in the third brake light, as well as a radio switch to operate the system without turning the ignition key.

FOR MERCEDES-BASED MODELS (incl. ZENEC Z-N966)
FOR FIAT-BASED MODELS (incl. ZENEC Z-E3766)

Contact your dealer for the article number corresponding to your vehicle model.



HYMER BIKE CARRIER



With the Bike Carrier you can easily and efficiently secure up to two bicycles or e-bikes in the rear garage. The main element is the vertical support pole for the bicycle holding bracket, which is permanently installed inside the vehicle. The support pole can be individually adapted to your rear garage in just a few simple steps, making the actual loading process a breeze. The bicycles are first pushed into the front wheel clamping brackets, at which point they will already be able to stand unsupported. This makes it easier to fasten them using the holding bracket, meaning the bikes can be easily and securely fixed in place before departure. If required, the system can be expanded by one bicycle at a time – up to a maximum of four bicycles.

NOTE: not compatible with vehicles with queen-size bed.

FURTHER HIGHLIGHTS:

- Very light – weighs less than 4 kg
- No permanent floor rails necessary in rear garage
- No holes in rear wall (unlike with a conventional bicycle rack)
- Virtually empty rear garage when not in use; holding brackets can simply be folded to the side
- Self-assembly possible

Article No. 3099575 – Mercedes/Citroën variant (vehicles WITHOUT a recess in the garage)

Article No. 3191648 – Fiat variant (vehicles WITH a recess in the garage)

Article No. 3120304 – Extension set for 1 bicycle

HYMER E-BIKE CHARGER



Flat e-bike battery? Not any more! Conveniently charge your e-bike batteries – while driving or parked up. The intelligent controller in the e-bike charger ensures that your HYMER motorhome's on-board batteries always retain sufficient residual charge. This retrofit set has been optimally adapted to the HYMER on-board technology to allow almost completely plug-and-play installation. When the engine is running or 230 V mains power is connected to the vehicle, the system operates fully automatically at the touch of a button. You only need to initiate the charging process manually when your vehicle is parked and not drawing external power. A 600 W inverter including mains priority circuit and intelligent e-bike charging control with control panel is already included in the scope of delivery. Also included is a 230 V circuit breaker (separate circuit) and all necessary plug connections.

Attention: In addition, the specific 230 V cables are required as well as two 230 V built-in sockets (if not already present). The power sockets are located in the garage of your HYMER motorhome. They enable you to plug in the e-bikes with the original chargers and simply charge them while driving.

One more tip: We recommend an on-board electrical system with at least two on-board batteries – ideally, the Smart-Battery-System. Just ask your HYMER dealer, they will be happy to advise you.

Article No. 3350785

HYMER DOG ACCESSORIES

We began with the idea of offering dog owners a range of products that are tailored to our vehicles. Then, in cooperation with the magazine Promobil, we organised a customer workshop to develop ideas and concepts. The result is our HYMER dog accessory range, for which we received the European Innovation Award.



SCAN THE CODE TO SEE OUR ENTIRE PRODUCT RANGE FOR YOUR NEXT TRIP WITH YOUR FOUR-LEGGED FRIEND HERE.



HYMER ALUMINIUM DOG BOX



After removing the cushions, the space-saving dog box is simply fastened to the seating area with its specially designed strap system. Lunch breaks or coffee stops are no problem, as the table – including legroom – remains completely clear. Your dog can get in and out of the dog box comfortably and, thanks to the optionally available entry protection, your furniture won't suffer either. The dog box was developed in cooperation with the Schmidt company – the market leader for premium dog boxes.

The high-quality Schmidt aluminium dog box is a perfect fit for most HYMER motorhomes. The attractive design with special strap system and foam wedges ensures both safety and comfort. The box contains a tailor-made, easy-care rubber mat as a mattress for your dog; the underbody is equipped with an anti-slip fabric.

- **Weight:** approx. 15 kg
- **Dimensions (W x H x D):** 43 x 52 x 65 cm or 43 x 59 x 75 cm

Article No. 2741299 – HYMER dog box, small

Article No. 2741304 – HYMER dog box, large

Article No. 2857243 – Universal sill protector for HYMER dog box



HYMER DOG BED WITH COMFY CUSHION AND LEAD



Thanks to its clever design, the tailor-made dog bed can be used in two ways: in the travel position (under the table) or in the static position (in front of the passenger's seat). Your dog is always with you, yet everyone at the table enjoys plenty of legroom. The dog bed is made from hard-wearing imitation leather which is easy to clean and colour-coordinated with the vehicle interior. Also included is the HYMER dog lead flex&leash for reliable fastening of your dog during travel. The comfy cushion insert is also equipped with a non-slip underside.

- **Upper material (cushion insert):** 45% polyester, 40% polyacrylic, 15% cotton
- **Base material:** 100% felt plus white coating with PVC dots
- **Washable at:** 40 °C. Hand wash only, not suitable for tumble drying
- **Weight:** 4 kg

Article No. 2675327 – for Fiat

Article No. 2799315 – for Mercedes up to model year 2018

Article No. 3122604 – for Mercedes from model year 2019



HYMER RETRACTABLE STORAGE BOX



The practical storage box enables the user to comfortably remove both small and large items from the floor storage compartment. The storage box glides on easy-to-assemble aluminium profiles that are screwed and bonded into place in the double floor. The loading box is sealed to prevent leakage of water. **Material:** ABS cavity profiles; **contents:** storage box with inner anti-slip mat, square aluminium profiles including fastenings.

For Hypermobil B-Class SupremeLine and B-Class MasterLine:

A special highlight is that the storage box can be extended in both directions. It can be moved 2/3 to the right and 1/3 to the left. This means that the storage box can be accessed from the right, left and even from inside the vehicle (by removing the floor cover).

Article No. 3271872 – **Compatible with Hypermobil B-Class SupremeLine 704 + 708 / B-Class MasterLine 780 + 790 + 880 + 890:** exterior dimensions (W x H x L): 64 x 17 x 187 cm, interior dimensions (W x H x L): 60 x 15 x 189 cm, kerb weight incl. aluminium profiles: 18 kg, payload: 35 kg

In the Hypermobil B-Class ModernComfort: The storage box can be extended outwards approx. 80 cm to the left. The storage box can be accessed from the left side of the vehicle and also from the interior (by removing the floor cover).

Article No. 2993942 – **Compatible with Hypermobil B-Class ModernComfort 550 + 580:** exterior dimensions (W x H x L): 24 x 14 x 145 cm, interior dimensions (W x H x L): 20 x 12 x 141 cm, kerb weight incl. aluminium profiles: approx. 8 kg, payload: 35 kg

Article No. 3188310 – **Compatible with Hypermobil B-Class ModernComfort 600:** exterior dimensions (W x H x L): 34 x 14 x 145 cm, interior dimensions (W x H x L): 30 x 12 x 141 cm, kerb weight incl. aluminium profiles: approx. 8 kg, payload: 35 kg

Article No. 2993644 – **Compatible with Hypermobil B-Class ModernComfort 680 + 690:** exterior dimensions (W x H x L): 52.5 x 14 x 145 cm, interior dimensions (W x H x L): 48.5 x 12 x 141 cm, kerb weight incl. aluminium profiles: approx 8 kg, payload: 35 kg



E-CONNECT PROMOTION PACKAGE



The E-Connect module only requires a 12 V supply and then receives data which is sent to your smartphone via Bluetooth. With the aid of the user-friendly E-Trailer app you can then access essential data about your motorhome at your convenience. The promotion package already includes the following modules at a discounted price: "E-Level", "E-Volt" and "E-Pressure".

Article No. 8501941



HYMER ELECTRIC BLANKET



The HYMER electric blanket ensures that your bed is perfectly toasty and warm so you can enjoy a relaxing and sound night's sleep. Thanks to GS-tested quality and the automatic switch-off function after 180 minutes, you can sleep for as long as you wish without a worry in the world. The electric blanket is the perfect size to keep one person warm.

- **Temperature levels:** four levels with automatic switch-off function after 180 minutes (sleep timer)
- **Material:** polyester
- **Colour:** Natural white (unbleached)
- **Dimensions:** 1,550 x 600 mm
Extra-long, 3.5-metre connection cable
- **Power consumption:** 4.4 A / 60 W
- **Power connection:** 12 V
- GS-tested quality
- **Care instructions:** washable at 30 °C
- Detachable controller with HYMER logo
- **Weight:** approx. 2 kg
- Suitable for all HYMER pop-top roofs

Article No. 3082515



HYMER PROTECTIVE COVERS



The original HYMER protective covers made from 100% polyester are pleasing in every detail: they provide an optimum fit, a design that matches the interior, low-friction fleece padding for easy fitting and a long lifespan thanks to particularly tightly quilted seams which are reinforced in the entrance area. With a 4 mm-thick breathable foam lining, the rear part of the covers transfer body warmth towards the back – to help you feel comfortable even on long journeys. Available in beige and graphite, machine washable at 30 °C on a delicate cycle. Includes one pair of protective covers for the driver and passenger seats, comprising separate covers for the seating surfaces and backrests (including rear pocket) and two pairs of arm-rest covers.

Contact your dealer for the article number corresponding to your vehicle model.



HYMER CAB CARPET



The HYMER cab carpet is a perfect fit: hard wearing, easy-care polypropylene tufted velour with bonded heel protector and rubber granulate underside. Also equipped with fixing points to prevent slipping. Can be customised with a premium nubuck border and double-stitched design, and with the HYMER logo.

Contact your dealer for the article number corresponding to your vehicle model.



HYMER LIVING AREA CARPET



Enhance the visual appeal of your living area with our light brown carpeting that is made especially for your vehicle. The material meets HYMER's high quality standards and feels pleasantly soft to the touch. At the same time, it is easy to maintain and consists of several sections for easy removal. The underside is covered with rubber granulate to prevent slipping. Available for all vehicles of the HYMER and HYMER Camper Van/HYMERCAR brands from model year 2018.

Weights by model range:
HYMER: approx. 10 kg, HYMER Camper Van / HYMERCAR: approx. 5 kg

Contact your dealer for the article number corresponding to your vehicle model.



HYMER CAMPER VAN/HYMERCAR POP-TOP ROOF INSULATION



Our four-piece pop-top roof insulation developed exclusively for the HYMER Camper Van/HYMERCAR model range ensures you sleep soundly in a cosy atmosphere, whilst being protected from the cold. Thanks to the sandwich construction, the pop-top roof is noticeably better insulated from the cold. The individual elements are fixed directly to the upper edges by Velcro tape (Fiat)/magnets (Mercedes) stitched onto the roof lining. The front element can be opened via two zips in order to let in light and fresh air.

Article No. 2328892 – only HYMER Camper Van / HYMERCAR Sydney

Article No. 2328897 – all HYMER Camper Van / HYMERCAR models, except Sydney

Article No. 3056732 – only HYMER Camper Van / HYMERCAR Grand Canyon S, Free S



HYMER CAMPER VAN / HYMERCAR REAR INSULATION, FOLDABLE



Approximately 8 mm thick, this foam insulation is tailor-made for all HYMER Camper Van/HYMERCAR models. Thanks to sewn-in magnets, it creates a perfect seal against the outer contours of the Fiat Ducato-based vehicle. The side facing the living/sleeping area is in beige polyester velour. The bottom half of the rear insulation can be folded up for easy access to the rear. It also comes with two windows for a clear view outside. **Weight:** approx. 2 – 3 kg.

Article No. 2478065 – all HYMER Camper Van/HYMERCAR models on Fiat chassis except Sydney

Article No. 2478066 – only HYMER Camper Van / HYMERCAR Sydney

Article No. 2875726 – all HYMER Camper Van / HYMERCAR models on Mercedes-Benz chassis up to model year 2018

Article No. 2994723 – Grand Canyon S and DuoCar S on Mercedes-Benz chassis from model year 2019

Article No. 3160477 – HYMER Camper Van Free S



HYMER CAMPER VAN / HYMERCAR REAR MOSQUITO NET



Effective in preventing insects from entering the vehicle whilst letting air circulate. Simple assembly thanks to welded-on magnets and sewn-on, flexible magnet strips. Access to the vehicle is provided via twin two-way zip fasteners. **Weight:** approx. 2 kg.

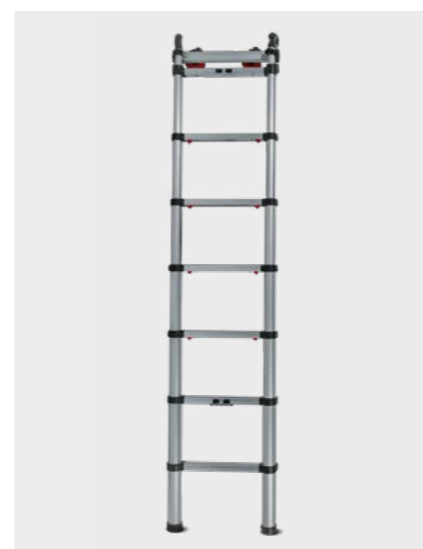
Article No. 2875732 – only HYMER Camper Van / HYMERCAR Sydney

Article No. 2875733 – all HYMER Camper Van / HYMERCAR models on Fiat chassis except Sydney

Article No. 2875736 – all HYMER Camper Van / HYMERCAR models on Mercedes-Benz chassis up to model year 2018

Article No. 2994727 – Grand Canyon S and DuoCar S on Mercedes-Benz chassis from model year 2019

Article No. 3189338 – HYMER Camper Van Free S



HYMER TELESCOPIC LADDER



The HYMER telescopic ladder is the perfect addition to your pop-top roof. It allows you to comfortably access the sleeping area via the ladder's seven rungs. If the ladder is not needed, it can be retracted to a length of 750 mm and stored safely. Using the supplied Gecko feet, the ladder can also be additionally attached to the vehicle's exterior. This allows the roof to be easily reached from the outside.

TECHNICAL DATA:

- **Length (extended):** 2,100 mm
- **Maximum standing height:** 1,170 mm
- **Length (retracted):** 750 mm
- **Rungs:** 7
- **Weight:** approx. 6.5 kg

Article No. 8501950



HYMER FITTED SHEETS



The made-to-measure Original HYMER fitted sheets can be recognised by their excellent fit. The material is a mix of polyester, cotton and elastane and feels pleasantly soft. Furthermore, the fitted sheets stay nice and soft and retain their shape even after regular washing. HYMER fitted sheets are machine washable at 60 °C.

- **Material:** 61.58% polyester, 38% cotton, 0.42% elastane; STANDARD 100 by OEKO-TEX®

Contact your dealer for the article number corresponding to your vehicle model.



HYMER MATTRESS TOPPER



Suitable for allergy sufferers, the HYMER mattress topper ensures maximum comfort while you sleep thanks to specially developed Visco foam. It is breathable and quickly absorbs moisture, transferring it to the centre layer and the sides. The foam adapts to the body's contours and distributes body weight more evenly – for improved circulation and greater comfort even when lying down for long periods. The cover is machine washable at 60 °C and impresses with its modern HYMER design and soft surface, while the non-slip dimples on the underside prevent the mattress from sliding off the base.

- **Material:** (cover) 61% polyester and 39% cotton, (filling) 100% polyester
- **Thickness:** 5.5 cm (foam 4 cm + 1.5 cm padding)

Contact your dealer for the article number corresponding to your vehicle model.



HYMER CHILDREN'S BED



A spare bed for all HYMER motorhomes and HYMER Camper Van/HYMERCAR models based on a Fiat or Mercedes-Benz chassis – ready to use in the blink of an eye. Additional benefits include quick and easy assembly as well as compact packing dimensions. The two wooden base boards are fitted between the seating surface and the backrest of the driver's seat, and the fold-out mattress is laid on top. The scope of delivery includes fitted sheets.

- **Load-bearing capacity:** 50 kg
- **Bed surface:** 160 x 70 cm
- **Packing dimensions (W x H x D):** 60 x 90 x 21.5 cm
- **Weight:** approx. 10 kg
- **Cover material:** 100 % polyester (washable at 30 °C), filling: polyether polyurethane foam
- **Material (fitted sheet):** 47% cotton, 47% polyester, 6% Lycra, colour: mottled anthracite (washable at 40 °C)

Article No. 3228029 – for Fiat

Article No. 3234049 – for Mercedes from model year 2019



HYMER BED LINEN



Healthy sleep is one of the most fundamental human needs. By choosing HYMER bed linen from ESTELLA, you will be getting a special premium quality product. You are sure to be impressed by the quality of the unique maco cotton interlock jersey – just feel the difference! The key product features are: 100% super-combed Egyptian maco cotton – yarn count Nm 100/1 (100 metres of this yarn weighs just 1 gram) – feels very pleasant to the touch, non-iron and dryer-proof, easy-care and dimensionally stable (no warping possible – guaranteed not to shrink after washing). In addition, the zips come with a lifetime warranty. Tested in accordance with STANDARD 100 by OEKO-TEX®. **Test certificate:** Confidence in Textiles (ingredients are free of contaminants and skin-friendly).

The exclusive design matches the colour scheme of HYMER vehicles. **Dimensions:** pillow 40 x 80 cm, cushion 50 x 50 cm, duvet 135 x 200 cm. 1 complimentary cushion cover (50 x 50 cm).

Article No. 2859159 – Migratory Birds bed linen

Article No. 3272198 – Flora bed linen



HYMER PREMIUM PERFORMANCE DUVET AND PILLOW



The original premium performance duvet is notable for its exclusive quilting and unique border. The duvet consists of a light and airy cotton cover and high-performance textile filling. The filling fibre mix bounces back after washing so that the duvet returns to its original volume. It has excellent temperature and moisture-regulating qualities and is very easy to care for. Non-bulky, it can be easily stowed away, saving on storage space. The premium pillow is made to the highest standards and has a unique 3-part structure, making it especially easy to adjust to your preferred height.

DUVET: 135 x 200 cm

- **Cover:** back and front fine batiste made from 100% finest cotton, super combed, especially long fibres, pre-shrunk
- **Filling:** technical fibres 100% polyester

PILLOW: 40 x 80 cm

- **Cover:** 100 % finest cotton, pre-shrunk
- **Filling (inside casing):** technical fibres, 100% polyester
- **Filling (wadding):** fine, heavy-duty volume fibres, 100% polyester, suitable for tumble drying, machine washable up to 60 °C, made in Germany
- **Weight:** duvet and pillow each approx. 1 kg

Article No. 2812898 – Duvet

Article No. 2860267 – Pillow



HYMER-SLUMBER SET



The HYMER slumber set consists of the following: 1x HYMER performance duvet and 1x HYMER performance pillow, matching bed linen in Migratory Birds or Flora furniture finish, includes complementary cushion.

SPECIAL PACKAGE PRICE:

Article No. 8501346 – in Migratory Birds furniture finish

Article No. 8501345 – in Flora furniture finish



– HYMER Lifestyle Collection –

TRAVEL IS ALWAYS IN FASHION.

Enjoy being active and discovering new places? Wherever your journey takes you – we have the perfect outfit. In other words: clothing you can feel good in. Made for both relaxing and exploring, the HYMER Lifestyle Collection stands for top quality and timeless design.



HYMER SMART & EXCLUSIVE JACKET

In partnership with VAUDE, we have developed a modern and pleasantly light outdoor jacket – the HYMER Smart & Exclusive jacket is the ideal travel companion for all HYMER fans. **Material:** main fabric: 100% polyamide, inserts: 100% polyester, **lining:** 100% polyamide, **padding:** 100% polyester (recycled), **fit:** Regular Fit.

Women: XS – 3XL / Men: S – 4XL



HYMER TRAVEL & RELAX JACKET

The HYMER Travel & Relax jacket is a fashionable outdoor fleece jacket manufactured in partnership with VAUDE. With a soft fleece inner, it is exceptionally comfortable. Additionally, it is pleasantly warm, easy to clean and quick-drying. Ideal for everyday use as well as for casual outdoor activities. **Material:** 100% polyester, **fit:** Regular Fit.

Women: XS – 3XL / Men: S – 4XL



HYMER SMART & EXCLUSIVE GILET

Developed in partnership with VAUDE, the blue HYMER Smart & Exclusive gilet can be worn with almost anything and is perfect for your HYMER motorhome holiday. The side sections made from "Performance Stretch" fabric are ultra-breathable and also ensure improved range of motion. **Material:** main fabric: 100% polyamide, **inserts:** 100% polyester, **lining:** 100% polyamide, **padding:** 100% polyester (recycled), **fit:** Regular Fit.

Women: XS – 3XL / Men: S – 4XL



1/



4/



9/



2/



5/



10/



3/



6/

7/



8/



11/

1/ WATCH

Type: chronograph with date display, **material:** scratch-resistant mineral crystal glass, **diameter:** 44 mm, water-resistant to 10 ATM. Article No. 3042943

4/ GUEST TOWEL

Material: 100% cotton, Jaquard with velour finish on the front side. Article No. 3043623

7/ TOILETRY BAG

Material: 100% polyester, **dimensions (W x H x D):** 25.8 x 21 x 8 cm, **colour:** outside mottled grey / inside blue. Article No. 3001915

10/ CAP

Material: peak: 100% cotton, top part: 90% polyester / 10% viscous. Article No. 2987735

2/ COSY BLANKET

Colour: Platinum grey, **size:** 150 x 200 cm, **material:** 100% polyester (microfibre). Article No. 3005173

5/ DRESSING GOWN

Material: 100% cotton. Sizes (unisex): S/M, L/XL, 2XL/3XL

8/ HYMER MODEL VEHICLE

Scale: 1:87, **length:** 7.5 cm, **material:** metal, **age recommendation:** 3 – 8 years. Article No. 2994686

11/ CAMPER SET

Detailed 1:24-scale model vehicle based on the B-Class ModernComfort. Exclusive edition in silver with extensive accessories. Article No. 3239243

3/ WELLNESS TOWEL

Material: 100% cotton, Jaquard with velour finish on the front side. Article No. 3043622

6/ WEEKENDER

Material: 100% polyester, **dimensions (W x H x D):** 60 x 40 x 30 cm, **Colour:** exterior: grey melange / interior: blue. Article No. 3002051

9/ UMBRELLA

Article No. 3123848

NOTE

This brochure describes the series production status at the time of publication. Despite careful checking of the contents, printing errors may still appear. We reserve the right to modify the equipment or make product improvements during the course of the model year. Before concluding a contract, please contact one of our authorised HYMER dealers for information on the current product and series status.

Copyright © 2021 Hymer GmbH & Co. KG

Hymer GmbH & Co. KG, Postfach 1140, D-88330 Bad Waldsee,
www.hymer.com

The Hymer logo is presented as a white puzzle piece with interlocking tabs and holes. The logo text is printed on the piece.

HYMER
ORIGINAL PARTS