



The 2007 Collection

The adventure **starts here:**



The next chapters of Auto-Trail's history has yet to be written, however we can predict with some confidence, that we will continue to follow our beliefs, actions and ambitions which have proved so successful over the first 25 years.



Every Auto-trail motorhome is designed to 'mirror' the many 'domestic' comforts, features, fixtures and fittings found in your own home.



This brochure is intended to give you an insight into the exciting world of Auto-Trail Motorhomes. It explains and invites you to see for yourself how we manufacture our luxury motorhomes, the care and considerations taken from

initial design concepts to the finished home and our comprehensive quality and safety inspection policy. Why not live the dream yourself by visiting one of our approved Auto-Trail regional stockists (the full list is shown on our website www.auto-trail.co.uk).

Each dealer will help and assist you in choosing a motorhome which will meet your needs and requirements. They can explain the many different methods of funding your purchase and they can arrange for you to take a test drive, which will demonstrate the 'car like' driving

characteristics of a modern motorhome. Whichever model meets your budget and fits your lifestyle, you are guaranteed to be part of the family which is 1st for choice, 1st for luxury and offers enviable and unbeatable value for money.

- Heavy duty construction with all-round cavity wall, floor and roof insulation (e.g.: total wall thickness 40mm).
- Luxury upholstery schemes with additional scatter cushions and wall to wall fitted carpets.
- Full Central Heating systems powered by gas and / or electric.
- Fully equipped en-suite washrooms with electric flush toilets and shower cubicles.
- Hot & cold water systems, all of which are powered by gas and electric.

- Double glazed windows and large panoramic roof lights with night blinds and integral flyscreens.
- Internal 'aircraft style' lighting systems, many with additional dimmer controlled mains electric lighting.
- Fully equipped kitchens with full cookers, gas/ electric hobs and large refrigerators with freezer compartments.
- Multi directional TV aerials.
- Exterior gas BBQ points and hot & cold showers.

The New Generation of Auto-Trail ranges - the most highly specified leisure homes on the market today. Auto-Trail Motorhomes with the stamina to travel up to 365 days a year, drive in comfort and style and live in luxurious surroundings.



2006
Motorhome
of the year
(Industry Awards
- 2005)

2006
Best Bathroom
of the Year
(Industry Awards
- 2005)

2006
MotorCaravan
Quality Award
(February -
2006)

2006
MMM - 'A' Class
of the Year
(December -
2005)

2006
Which
Motorhome
Best Bathroom
of the Year
(April - 2006)

Auto-Trail 1982 - 2007



25 Years of motorhome manufacture



Contents

THE NEXT GENERATION

- 02-03 Introduction
- 04 Factory Tours
- 05 SE Pack
- 05 Auto-Trail Owners Club

THE 2007 COLLECTION

- 06-07 2007 Collection
- 08-11 Tracker
- 12-15 Apache
- 16-17 Miami
- 18-25 Cheyenne
- 26-32 Frontier

TECHNICAL DATA

- 33 New Chassis Explained
- 34 Chassis Data
- 35 Exterior Features
- 36-37 Interior Features
- 38-41 Floor Plans

The 'New Generation' of Motorhomes setting new standards to meet the needs of you, today's discerning customer.

From the moment you enter an Auto-Trail Motorhome, you will appreciate why for 25 years, the Auto-Trail name has been synonymous with luxury. A reputation for excellence in design, operation and reliability has been built from the skills of an industry leading design team and our close bonds with our customers and members of the Auto-Trail Owners Club. All of which help and contribute to provide the right styles and solutions for your Luxury Leisure Vehicle requirements.

Listening to our customers has been one of the most important ingredients in our 25 years of success. Understanding customers needs and requirements improves every precious part of our motorhomes, whilst keeping in mind the practical priorities of the customers who enjoy using them. This philosophy applied in the early years is still an integral part of the success story today.

Whichever of the Auto-Trail models you choose, you are guaranteed a high level of comfort, performance and reliability expected from a company whose reputation has been built from meeting and exceeding the expectations of our customers for over 25 years. Step inside any one of our many motorhomes to fully appreciate the obvious element of pride taken in the superior craftsmanship and use of premium

materials. Or why not simply stand back and admire the distinctive design and elegant smooth lines of the exterior bodywork. You will soon appreciate why Auto-Trail Motorhomes are regarded by many as Britain's most popular luxury leisure vehicles.

Whether you drive the camper-sized Tracker or the impressive Chieftain our commitment to your safety is paramount. Every Auto-Trail Luxury Leisure vehicle is fully compliant with Quality Standard ISO 9002 and the latest European standards governing motorhome construction and use. Our dedicated staff conduct rigorous and comprehensive inspections throughout the many production process of each motorhome, all aimed at affording you and your family the highest level of safety and complete peace of mind.

Factory Tours



See first hand what makes Auto-Trail motorhomes so special

Come along and see for yourself why we have the highest reputation for producing popular, value for money motorhomes. Our purpose built, modern factory is centrally situated just off the A180 at Europarc, a prestigious new business park on the outskirts of Grimsby, North East Lincolnshire. (DN37 9TU for route planning or satellite navigation users).

Tours are available monthly and, to ensure you receive our individual care and attention, each tour has a limited number of people and can only be attended by pre-booking. You will be given a full tour of our manufacturing premises seeing how we produce our motorhomes from preparation of the cab, body conversions, to final shipping area. We do not have a display area so if you want to see our full range of motorhomes, please arrange to visit one of our appointed dealers. Because these tours prove very popular, please understand we restrict places to 2 people per booking.

Call Auto-Trail on 01472 571000 to book your tour from January 2007

1. The tour will give you a comprehensive insight into all aspects of our state of the art motorhome production methods. Starting with the preparation work for the Fiat, Mercedes-Benz or Renault chassis cab, then moving to the floor and side wall manufacturing department, and onto the cabinet shop where craftsmen of the highest standards produce all of the latest ranges of furniture.

2. Following on down the production line you will see where the actual body conversions are pre-assembled in our most unique manner. The bodies are lifted by crane and carefully lowered onto the pre-prepared chassis cab. From here you will follow the free flow production line seeing how the roof and back panel is added to reveal a recognisable motorhome.

3. Finally as you approach the end of the production line you can see the extensive series of inspections our

motorhomes are subjected to before being moved to the shipping area. Further pre-despatch checks are made here and it is only when we are completely satisfied that all vehicles have completed and passed the final checks that they are signed off and released for transportation to our network of appointed dealers.

To attend one of these unique and informative tours simply telephone Auto-Trail on 01472 571000, and our operators will advise you if your preferred date is available.



You will be asked your name, address and a contact phone number and issued with a confirmation number. Your phone number will only be used should we have to contact you due to unforeseen circumstances which have caused the tour to be cancelled.

The Auto-Trail Owners Club

Don't think that once you have bought your new leisure vehicle you are on your own...

There is a warm and friendly welcome waiting for you at the Auto-Trail Owners Club.

The ATOC looks forward to meeting and greeting like-minded enthusiasts, so, if you are new to the family of Auto-Trail owners or established owners who have not got around to it, join now and share the experience.

Your club has a reputation for friendliness and informality and members enjoy meeting regularly to share a variety of activities and adventures. Whatever you enjoy doing there is something for everyone and always new experiences to try.

The ATOC organise events in a wide range of locations around the UK and Europe to give you the opportunity to sample something new in the comfort of a group. Enjoy holidays and social occasions with your new friends, and take advantage of the wealth of information, experience and technical information available from other dedicated members.

Join the family, join in the fun and add another dimension to the pleasure you get from your Auto-Trail Motorhome.



For more information and details of how owners of new Auto-Trail Motorhomes can enjoy a period of free ATOC membership, please contact:-

Mike Johnson, 273 Barrowby Road, Grantham, Lincolnshire, NG31 8NR (enclosing a SAE)

Email : mibar.johnson@ntlworld.com

Web : www.atoc.info

SE Pack

Your new Auto-Trail Motorhome will be fully equipped with all of the amenities you could possibly want and need, but we haven't stopped there. For those even more discerning owners we offer the SE Pack, providing a further enhancement to your comfort and enjoyment

Now included in the 2007 'SE Pack':

- Cab Air Conditioning.
- Recessed awning (lengths vary - model dependent).
- Radio/cd/dvd/mp3 player.
- Large flip down colour TV monitor.
- Multi channel TV/Radio (Freeview) receiver.
- Colour infra-red reversing camera.
- External Hot & Cold Shower.
- Exterior gas BBQ point.
- Special SE graphics.
- Special Auto-Trail umbrella.



Fully fitted and ready to go...

From Only:

£799

(£949) for all twin axle models



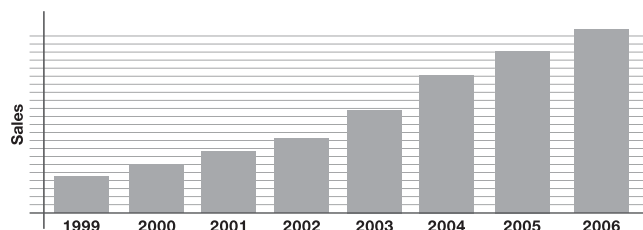


The 2007 Collection



More Choice as Auto-Trail's popularity continues to grow

In recent years, Auto-Trail have achieved an unrivalled track record of sensational growth and we are enjoying an ever increasing share of the UK motorhome market. In 2007 we estimate further gains with the addition of a completely new line-up built on all new chassis.



More choice for 2007 remains the important factor within the design teams thought process, thus providing customers with:-

More choice: A total of 21 primary floorplans from Fiat, Mercedes-Benz and Renault now provide a total of 64 different layouts within the '07 line up.

More motorhomes: Available with large overcab sleeping areas, or alternatively, all models are now available in the distinctive sleek low line format.

More vehicles: With twin underfloor areas which now house water tanks.

More: Comprehensive underfloor storage areas.

More variation: In designs, an increased number of models are now offered with optional lounge layouts, many of which now offer fully approved single or twin designated travelling seats with forward facing seat belts.

More: Use of large domestic size integrated fridge/freezers within the new kitchen areas.

More: Use of Fiat 'Fix & Go' systems (all Fiat models - except Frontier)

Fiat "Fix & Go" Kit

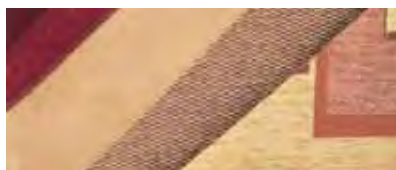
New for 2007, an automatic **"Fix & Go"** fast tyre repair kit which consists of a canister of sealant fluid, a small compressor with pressure gauge and various adapters for inflation. The kit allows you to restore tyre pressure in the event of a puncture, though you will eventually need to have the tyre repaired by a professional. The compressor may also be used only to check and top up the tyre pressure. In the rare event of a major tyre failure, remember you can call the new European "Fiat Camper Assistance" **008000-34281111**. They are available throughout Europe, 24 hours a day, 7 days a week, to help, assist and allow you to resume your journey as soon as possible. **"Fix & Go"** is supplied as standard equipment with the Tracker, Apache and the Fiat Cheyenne ranges.

Auto-Trail dealers can assist customers who have particular preference towards the traditional spare wheel and tyre. Spare wheels and tyres can be purchased from either your Auto-Trail stockists or an approved Fiat Ducato outlet.

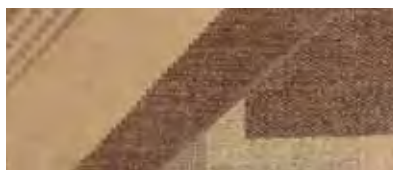


More Interior Fabrics for 2007

For 2007 our interiors have been transformed with many new designs, all complimented with new ranges of luxury soft furnishings.



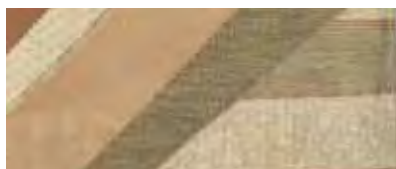
Regent



Richmond



Sandwell



Victoria



Belgravia



Westwood

TRACKER - Pages 8 - 11

The 2007 range of compact Tracker motorhomes comes with the choice of EK and EKS model layouts both built on the new Fiat Ducato X250 chassis cab. The choice of 100 and 130 Bhp engines are available and the standard cab specification includes central locking, electric windows and ABS brakes with the option of air conditioning.

Full Technical Specifications on Pages 33 - 41



APACHE - Pages 12 - 15

New to the Apache range for 2007 are the 634U and 634L layouts which join the popular 700 layout, all offering great value for money on the brand new Fiat Ducato chassis cab. A choice are available of 130 and 157 Bhp engines which promise even more economical motoring than their predecessors.

Full Technical Specifications on Pages 33 - 41



MIAMI - Pages 16 - 17

Exclusively built on the Renault Master chassis cab with two engines and automatic gearbox option, the Miami range offers a choice of two innovative layouts. Both have forward lounge areas, centre kitchens and at the rear a choice of twin singles or large permanent double bed.

Full Technical Specifications on Pages 33 - 41



CHEYENNE - Pages 18 - 25

As well as the new Fiat Ducato, the best selling Cheyenne range continues to offer the option of a desirable Mercedes-Benz chassis cab. Joining the brand new 696 and 696G layouts in the range for 2007, the innovative 840D is introduced with the first "walk-around" double bed at the rear.

Full Technical Specifications on Pages 33 - 41



FRONTIER - Pages 26 - 32

The ever popular Frontier range is still available on both Mercedes-Benz and Fiat Ducato X250 chassis cabs. The Dakota, Scout, Chieftain and Chieftain G layouts are all updated for 2007, and the internal luxury of the range is even further enhanced with a choice of soft furnishings and complementary trim available.

Full Technical Specifications on Pages 33 - 41



Tracker

Your perfect travelling companion



Practical for every day use, our two camper-sized luxury compact motorhomes are the perfect answer for those restricted by space.



Tracker EK

You too can enjoy the get-up-and-go freedom afforded by this versatile motorhome. Whether it is enjoying a well earned break touring the UK or the continent in style, or for everyday use nipping to the shops, and squeezing into those shoppers car parks, either of these two models will be equally at home.

From the moment you step inside, you will be amazed by the Trackers spacious and luxurious accommodation, which is complemented with new 'Sandwell' soft furnishing scheme and rich Acer furniture.

Each model has a modern spacious kitchen any chef would be proud to work in. With a stainless steel sink, full oven cooker and large refrigerator, all meals will prove easy to prepare and cook.



Tracker EK



Equally at home touring the UK or the continent, visiting the shops or a day at the races - the Tracker EKS fits all requirements.





Tracker EKS



Tracker Bathroom

The toilet and washroom area features the most ingenious use of space. There is even a fully enclosed shower cubicle, a rarity on competitors models of this size. The EK model is the more compact of the two models, whilst the EKS has longer settees to lounge on, and at bedtime they easily convert into two single beds or a king size double bed for a cosy night's sleep.

Luxury and essentials work side by side in these well thought out compact motorhomes and other

features include dimmer controlled mains lighting and a large overhead skylight.

This award winning compact motorhome is available in a choice of two Fiat high output diesel engines. Either the Hi-line, with overcab sleeping, or the Lo-line version with overcab storage ensures that there is a Tracker, the ultimate Multi-Purpose Vehicle, to fit all of your requirements.



Apache

Stunning styling and exceptional value for money





Apache 634L



Apache 700



Apache 634U

The value for money Apache range features stylish stunning lines and aerodynamic curves puts this market leading leisure vehicle within the reach of a new band of motorhomers.

Don't take our word for it, see for yourself. This range of convenient, practical and thoroughly luxurious leisure vehicles are available in three stunning layouts. All offer the perfect balance of comfortable sleeping accommodation, spacious living area and car-like features to make driving and socialising a real pleasure.

As soon as you enter the functional luxurious living area, the unmistakable sense of style and attention to meticulous details is surpassed only by the maximised use of space and comfort. Wander through any of the innovative layouts and marvel at the well equipped fully fitted kitchens, practical and spacious with all of the appliances and equipment you could possibly need to produce mouth-watering meals at any time.



Cab Air Conditioning
as standard with SE Pack



Encompassing all of the amenities you could possibly need, the Apache range ensures a complete home from home. .





Apache 700



Apache Bathroom

The 700 provides sculptured lounges designed for deep down relaxation with 'Regency' soft furnishings and curvaceous post formed furniture. The perfect place to ponder and wait a while, before moving on to a separate dining area. Imagine sipping wine whilst waiting for that scrumptious meal to be served.

All Apache models can be manufactured as a Hi-line, for those wanting a large double bed over the cab area, or for customers who prefer an added storage area above the cab, then the Lo-line no cost option may be preferred.

Encompassing all of the amenities you could possibly need, the Apache range ensures a complete home from home.

The unrivalled elegance of the washroom and separate shower compartment with well planned use of space and practical stylish fittings, satisfies the needs of all of the family in complete comfort.

Whether you choose a Fiat Hi-Line or Lo-Line model, a fuel saving Euro 4 common rail diesel 130Bhp engine is standard, or if preferred, the vehicle could be specially ordered with the optional 157 Bhp diesel engine.

The 2007 Apache range is an unprecedented achievement in respect of design, performance and refinement. All models provide luxury and convenience as standard features.



Miami

Spacious, warm and inviting living.



Miami 740S

Choose from two uncompromising models offering twin single beds, or a large double bed. The Miami is the right choice with far greater flexibility than any of its contemporaries and designed for pleasure.



Miami 740S



Miami 740S



Miami 740D

Bringing our inspired fleet of motor homes into a brand new class is the Renault Miami. Be prepared to stand out from the crowd with these elegant and stylish lo-line models, aerodynamically designed and beautifully proportioned.

As soon as you enter, you will be attracted to the spacious, warm and inviting living area. With the large over-cab panoramic sunroof there is a remarkably light and airy feel to the lounge area.

An innovative kitchen has everything required for even the most ambitious catering. Fully fitted units providing ample storage space and a generous 180 litre fridge with integral freezer compartment all add to the perfection in space management this unique motor home affords.

Impeccably designed curvaceous post formed furniture, mingles with fine furnishings to offer outstanding comfort and incomparable living space. The addition of concealed designer lighting creates a cosy atmosphere in which

to relax after a busy day. Why not unwind under a warm shower in the fully equipped, luxuriously appointed en-suite toilet and shower room before retiring to the ever-made permanent bed?



Miami 740D

Cheyenne

Unrivalled specification with a vast choice of layouts



With its vast choice of styles and layouts, the prestigious Cheyenne range offers something for everyone.



Cheyenne 630LB



Cheyenne 635

Whether it's the preference of a front wheel drive Fiat, the acclaimed rear wheel drive Mercedes-Benz, (M-B 660 & 696 models only), the choice of hi-line with sleeping areas over the cab, or lo-line with exceptional storage facilities, there is a model ideal for you and your family.

As soon as you enter the sumptuous confines of this "home from home", you will be impressed by the inviting lounge area with 'Victoria' furnishing schemes. Lounges now feature side-facing settees with twin arm rests and twin scatter cushions. The clever use of space in the design and the use of 'Reflex' foam takes your comfort to the highest level, and attributes to the "Ah its great to be home feeling".



Cab Air Conditioning
as standard with SE Pack



Cheyenne 630LB

The Cheyenne's commitment to new standards of style and sophistication takes luxury motorhomes to a new era.





Cheyenne 632



Cheyenne 635



Cheyenne 632

Some self contained couples say their ideal model is the Cheyenne 635, offering distinct areas for lounging, cooking, showering and dressing. All have the same high specifications synonymous with this exceptional range of motorhomes. The story does not end there, what about the Cheyenne 660? This no compromise model has a master bedroom with fixed bed, generous forward lounge and fully equipped designer kitchen with large 180 ltr fridge. All offering the most discerning

motorhome luxury and practicality every trip. The 696G has a large integral storage area, ideal for bicycles, scooters etc. This brilliantly designed family leisure vehicle has a permanent rear bed, a full width en-suite washroom/toilet area, centre kitchen, forward lounge and expansive storage facilities.



Cab Air Conditioning
as standard with SE Pack

Designed without compromise the Cheyenne – the jewel in the Auto-Trail range – offers a high quality of living with unsurpassed luxury.





Cheyenne 696G



Cheyenne 696G



Cheyenne 660



Cheyenne 660

The choice is yours and it will be a difficult one to make. Do you want the classic award winning end-kitchen design which gives you that extra space for entertaining?

Add long settees which provide a choice of two singles or a king size double bed offered by the Cheyenne 630LB, or a rear fixed bed (there whenever you need it) offered by the Cheyenne 632. The Cheyenne range is designed to offer the greatest choice.



Cab Air Conditioning
as standard with SE Pack



Beautifully proportioned with perfect space management and uncompromising comfort, the Cheyenne is designed for demanding owners.





Cheyenne 840 lounge



Cheyenne 840S



Cheyenne 840S

Following the success of the G model, a new 696 low-bed model has been introduced which is perfect for those who prefer a lower rear bed and a shallow integral storage area. The popular Cheyenne 840S has an Alko twin-axle chassis. This long-distance touring apartment offers everything you need. Large forward lounge, centre kitchen with a massive 180 ltr fridge including a full width freezer compartment, separate bedroom with two single beds and full width en-suite toilet/washroom/ dressing room.

STOP PRESS.....

The latest introduction to the Cheyenne range is the new 840D, our very first layout with a large island (walk around) double bed. The rear bedroom with its full width en-suite toilet/washroom/shower area can only be described as "home from home"

Once again, remember all Cheyenne models can be specified as Hi or Lo Line variants, the decision is yours.



Frontier

Grand touring luxury with engineering excellence



This class leading performer provides the benchmark against which all other motorhomes in this class will be judged.



With its hallmark grand-touring luxury and engineering excellences, the Frontier has been designed and refined without compromise.

This premium range of functional luxury motorhomes provides a unique range of chassis and bodywork styling designed to offer the most discerning owner more choice than any other manufacturer.

The unmistakable sense of exterior style of these exclusive models continues inside. Optimised living space offers the highest levels of comfort and practicality.



Dakota

The Frontier range has been designed to cover every requirement whether it is room to sleep, room to entertain, or just space to put away those bulky essentials...





Chieftain



Chieftain



Dakota

We strongly believe that through our commitment to new standards of sophistication and style and our engineering excellence, we are taking grand-touring Motor homes and the Auto-Trail name into a new whole new era.

A stylish interior with various floor plans offers a perfect solution for your leisure needs.

The Dakota provides a permanent fixed bed with a fully fitted washroom and separate shower cubicle. Those preferring a roomy lounge with an end washroom and spacious dressing area will choose the Mohican. Without the permanent bed, the classic Scout has living and sleeping space for up to six people.



Cab Air Conditioning
as standard with SE Pack



Whichever model you choose from the fabulous Frontier range you will be astounded by the elegance, performance and sophistication...





Arapaho



Dakota



Mohican

The Chieftain, with its permanent double bed, significant lounge area and generous integral rear storage area (G model only) is prepared for any event. There is room for fishing rods, golf clubs, windbreaks, sun lounger, surfboards etc, all stored safely away until you are ready to use them.

Fully fitted and equipped kitchens, allowing you to cook the perfect meal, feature dining areas with soft lighting to create the ideal

ambience. Then withdraw to a wonderfully luxurious lounge with total comfort, before retiring to the ever-ready bed alongside the fully fitted en-suite washroom with separate shower cubicle.

Completing the range, the elegant six-wheeled Arapaho offers even more space for gracious living.

By optimising the living space in every model the Frontier range caters for the requirements of all discerning motorhome users.



The unmistakable sense of style, afforded by the Frontier Range, scales the heights of luxury.



Mohican

The New Chassis Explained

Just look at the features.....



The basic ingredients of versatility

The new Ducato Camper fears no bends and no terrain, no matter how bumpy.

It's chassis frame has been specially designed to be the base of your motorhome. Greater stability is ensured by a specific suspension setup and stabiliser bars front and rear.

The range variety is rich and wide, with a choice of 4 chassis lengths and over 200 versions that enable you to pick a tailor-made solution for any type of motorhome.

The new Ducato Camper uses latest generation engines:

All of them use Multijet, all of them Euro 4 compliant, mated to newly-developed 6-speed gearboxes (5 speeds for the 100 Multijet).

With a peak torque from 250 Nm to 400 Nm, all the engines powering the New Ducato ensure absolute driving pleasure, superior pick-up in any situation, especially when overtaking, driving uphill, or negotiating a bend.

A cab predisposed for conversion

(without a roof and without a back wall), it offers factory quality for any conversion and makes it possible to fit Fiat type-approved seat belts.

Double-arm seats

also available on original Fiat type-approved pivoting supports

Plenty of room between seats to move freely to and from the cab and the habitation area

Wider track

A standard feature on all Fiat Cheyenne models, provides enhanced stability

100, 130 & 160 Multijet Power Engines

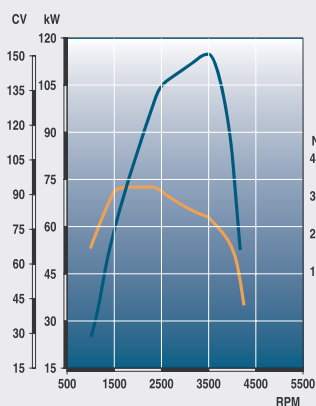
Electricals

reliable, built on CAN design

Chassis Special

A Fiat Auto concept, featuring light-weight construction making for enhanced loading capacity, and reduced ground clearance making for easier access to the habitation area

160 Multijet Power to Torque ratio



The engines and gearboxes powering the new Ducato Camper were tested on cab-over prototypes and adapted for use on a motorhome.

The 130 Multijet has been specifically designed for exclusive use on motorhomes.

Engines and Gearboxes	100 Multijet	130 Multijet	160 Multijet
Displacement cc	2298	2287	2999
Type	4-in-line cylinder diesel Multijet direct injection Turbocharger with intercooler	4-in-line cylinder diesel Multijet direct injection Turbocharger with intercooler	4-in-line cylinder diesel Multijet direct injection Turbocharger with intercooler
Mechanical gearbox	5 speeds + Rev	New 6 speeds + Rev	New 6 speeds + Rev
Timing system	Chain controlled Double overhead camshaft Hydraulic tappets 4 valves per cylinder	Belt controlled Double overhead camshaft Chain cam-to-cam Hydraulic tappets 4 valves per cylinder	Chain controlled Double overhead camshaft Hydraulic tappets 4 valves per cylinder
Max power output	100 bhp (74 kw)	130 bhp (95.5 kw)	157 bhp (115.5 kw)
At rpm	2900	3600	3600
Peak torque	250 Nm	320 Nm	400 Nm
At rpm	1500 - 2700	2000 - 3000	1700 - 2500



Stockists Stamp:

Auto-Trail VR Limited, Trigano House, Genesis Way, Grimsby,
North East Lincolnshire, DN37 9TU.

Tel: +44(0) 1472 571000 Fax: +44(0) 1472 571001

e-mail: sales@auto-trail.co.uk

For further information on models, specifications, technical information and much much more...
....please visit our website

www.auto-trail.co.uk

Parts Department Tel +44(0) 1472 571003 Fax +44(0) 1472 571002



Warranty Included

Auto-Trail have endeavoured to convey to all our customers all the benefits which are available within the industry. With this in mind we have extended the normal manufacturers warranty to include cover for major items for an extra period, giving peace of mind for a total of 36 months. Full details are outlined in a policy document. Please contact your official Auto-Trail stockist for further information.



A new call centre reserved for motorhome drivers is now available. All you have to do is call 00800-3428 1111 and a knowledgeable operator speaking your language will give you comprehensive information on the product and the services offered, and will transfer your call to a specialist technician or to Fiat Camper Assistance, the on-road assistance team for the service of motorhome customers.

You can call from any European country, 24 hours a day, 7 days a week, to get immediate help. The best specialists will assist you in the event of an accident, a breakdown, lack of fuel, loss of keys, partial theft, etc. During vehicle repairs, you can benefit from a replacement vehicle of suitable size and hotel accommodation.

To enable you to resume your journey as soon as possible, the Fiat Camper Assistance call centre remains in direct contact with you and the workshop that is taking care of your vehicle. It can help them order the parts needed so as to ensure that your vehicle is repaired quickly as possible and you can resume your trip promptly.

All photographs show vehicles fitted with the optional SE pack and photographs may show other optional extras. The content of this publication is as accurate as possible from the information available at the time of going to press (February 2007). Auto-Trail Motorhomes reserve the right to alter specifications, prices and model ranges as materials and conditions demand, which could affect the unladen weight and therefore can accept no responsibility for discrepancies between this information and subsequent models. All Motorhomes in this brochure conform to European Standards for Motorhomes: EN1646



The leader in camper sales in every European country, Fiat stands out, for the services it offers you as you travel and the maintenance services it provides for your vehicle. The credit goes to a European network of over 7,400 Fiat Ducato service centres, where you can find fully equipped workshops, specialist personnel, and all the parts you may need for your motorhome.

To give you the all-round solutions, Fiat Ducato has established in Europe over 1,100 specialist centres: the Fiat Camper Assistance workshops – with workshop dimensions to accommodate motorhomes, lifts and parking areas suitable for your vehicle – where motorhome drivers are always welcome.

