

TISCHER FREIZEITFAHRZEUGE

PICK-UP CABINS & TRAILERS





WELCOME TO TISCHER A SUCCESS STORY

TISCHER leisure vehicles have been part of my life and well-loved companions for our customers since 1973. The motor home cabins are products made in our own factory in Kreuzwertheim. My father, Josef Tischer, and I founded the company together and I took over management in 1991.

We now deliver TISCHER throughout Europe, but our demands on the quality of the materials have not changed. The construction has developed further over the years and we have been able to extend our product range bit by bit. The cabins are now produced in the modern sandwich construction which makes them lighter and sturdier.

I remember that we almost exclusively adapted the TISCHER cabins to VW platform trucks up until 1983.

We can now supply attachment cabins for almost all pick-up versions available on the German market, and obviously all vehicles as well. The full service is thereby guaranteed!

Our team is currently made up of 20 employees who build around 140 cabins per year and adapt them to the basis vehicle. They also deal with customer enquiries and are responsible for the service department. We generally do not need more than one week to procure any spare part customers may need. This is something we are proud of.

We want to continue writing the TISCHER success story. Proximity to the customers is therefore important. After all, they are the ones who know best what makes the difference with TISCHER leisure vehicles.

I hope you enjoy leafing through the catalogue and I wish you exciting travel experiences with your TISCHER cabin. We would be very pleased if you would share your holiday impressions and suggestions with us at www.tischer-pickup.com.

Yours,

Peter Tischer





OUR TEAM PHILOSOPHY

„WE ARE STRONG AS A TEAM“; and that doesn't just apply to teamwork in the factory at TISCHER. It means teamwork with the customer as well. We receive important suggestions and tips from our customers. Some of them cover several thousand kilometres per year with their pick-ups and TISCHLER cabin. There's nowhere else we can find more know-how.

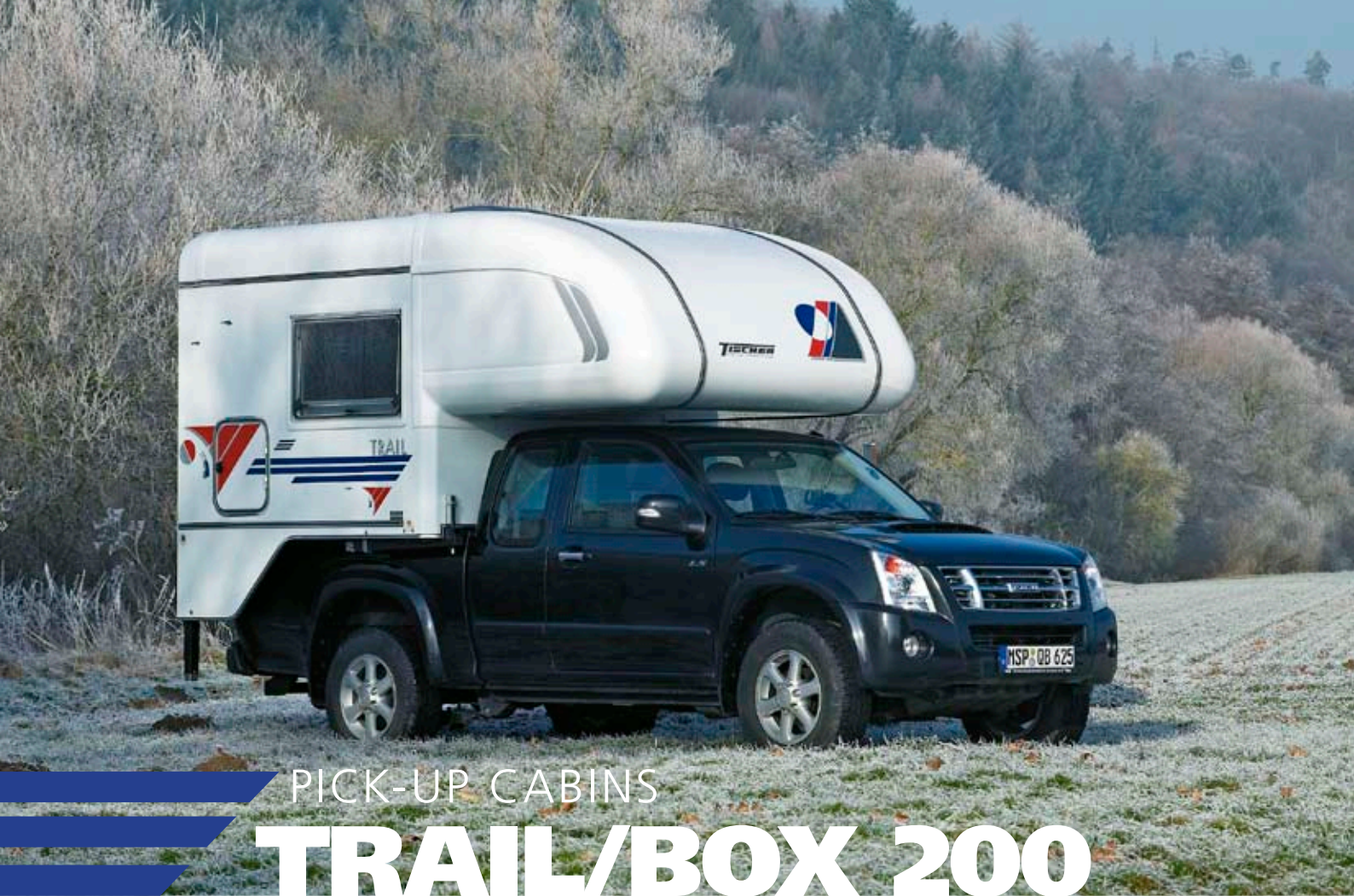
For us, it is important to develop the TISCHLER cabins as close as possible to the real conditions in which they are used. Most TISCHLER drivers use their pickup each day to drive to work or as a leisure vehicle. After all, it cuts a good figure in all respects with its generous loading space and robust handling. Spontaneous holidays or longer periods of travel should therefore be possible without spending too much time on converting the vehicle.

TISCHER has constructed its models so that setting up and removing the cabin is possible within a few minutes and without converting the vehicle - even for those without experience. This increases flexibility at the holiday destination as well: the cabin is set down in just a few strokes of the hand and off you go with a full vehicle including loading space. This means all of the advantages of the pick-up are also available to you when away from home.

Because the TISCHER cabins can be used without too much interference with the vehicle, there's nothing in the way of reselling your pick-up. If you buy a new vehicle, we can attach the necessary devices within one day. Weeks long spent in the workshop for conversion? Not with us.

TISCHER are the perfect home away from home for individualists who want to fulfil their holiday dreams. Stop compromising. Comfort flexibility, off-road trip or cosy evening with a glass of wine – TISCHER leisure vehicles are the perfect holiday companion.





PICK-UP CABINS

TRAIL/BOX 200

With a total length of 3.5 metres, the TRAIL 200 is our most compact model and is therefore the perfect companion for active holidays. The tow bar is not restricted so boat trailers, horse boxes or other such equipment can be taken along without any problems. Despite the compact construction, the interior space of the TRAIL 200 is pleasantly spacious.

The TRAIL 200 can be used for all pick-ups with 1.5 or double cabins. If you use the TRAIL 200 with a 1.5 cabin, it almost seamlessly meets up with the trunk of the basis vehicle. The slope angle is not restricted making it perfect for off-road trips. With its low overall weight of less than 500 kg, it increases your loading scope. The TRAIL 200 is equipped with a back entrance. The middle seating area can be converted into an additional bed.





Included as standard: refrigerator
Dometic RM 8401 (12 V / 220 V / Gas).

Cabin size

Alcove bed size 198 x 153 cm
Seating area bed size 198 x 120 cm
Length of interior floor 200 cm
Box length 367 cm
Total width 211 cm
Total length (VW-Caddy / Fiat Strada) 468 cm
Total length
(1.5 cabin/double cabin) 513 cm
Total height (VW-Caddy) 256 cm
Total height (Fiat Strada) 270 cm
Total height
(1.5 cabin/double cabin) 299 cm
Standing height 195 cm

Suitable basis vehicles

All types of pick-ups:
Ford Ranger, Mazda, Mitsubishi, Isuzu, Nissan,
Toyota Hilux, VW Amarok, Tata Xenon, Fiat Strada

Box

Modern sandwich construction
Stove-enamelled, smooth aluminium outer membrane
30 mm solid foam insulation
3 mm poplar plywood inner cladding
Multi-coloured exterior design
Accessible roof
SEITZ anti-thermal-bridge double glazed window with mosquito and blackout blind
Double-shell roof covers with mosquito net and blackout



Included as standard: gas heating
TRUMA E2400 with fan.

Entrance doors with security lock and mosquito blind
Windows and waste bin
Manual jacks
Plastic washer for supports

Alcove

Aerodynamic alcove, sandwich with 30 mm
PU insulation

10 cm thick foam mattress,
detachable cover with zip

Lounger with slats

SEITZ anti-thermal-bridge double glazed window
mosquito and blackout blind in the left alcove

Living area

Decorative coat on interior walls
PVC floor covering

Furniture made of light poplar plywood with modern
easy-care coating

Kitchen furnishings and table with durable
surface

Winter backrests

8 cm thick padding made of high quality foam

Covers with modern design, detachable zips

Curtains on living area windows

Middle seating area convertible into bed

Forced ventilation on all storage cupboards

Kitchen

Nirosta ignition-safe 2 flame gas hob

Nirosta sink



Included as standard: AGM battery 95
Ah with disconnection relay and automatic charger.



Included as standard: 230-V facility with CEE input
socket with 13A automatic fuse.

12-V / 230-V facility

Energy-saving 12-Volt halogen lighting in the
living area

230-V socket

CEE input socket with 13A automatic fuse

AGM battery, 12-V 95 Ah with disconnection relay and
automatic charger

Shut-off relay for 12-V refrigerator function

Gas appliances

Gas bottle box for 2 x 5 kg gas bottles,
accessible from outside

TRUMA SecuMotion safety gas pressure controller for
operating the gas system during travel

Shut-off valves for each individual consumer

Water system

Fresh water supply with 2 x 15 l canisters and
immersion pump



Available in two
versions.



Interior furnishings
200 with standard
equipment



PICK-UP CABINS **TRAIL/BOX 220**

The latest combination from Tischer GmbH: the Trail 220 cabin on the new VW Amarok. Cross-country tours are a dead cert with the VW Amarok. The safe off-road journey can begin with the basis vehicle and the pick-up cabin Trail 220.

Lowered with four manual jacks, the 220 model of Trail looks like it comes from a single mould. The 387 cm length living box consists of 34 mm thick sandwich panels with a stove-enamelled outer membrane. The cabin is not much wider than the basis vehicle. You enter through the trunk door into living area using a mechanically extending step with two rungs.

A wardrobe, on-board kitchen and water supply from a winter-safe insulated tank with 80 litre capacity are of course included. The sanitary room to the left behind the trunk offers a cassette toilet, wash basin, shower and mirror cabinet. A dining area provides space for four people.



„Whether mountain,
valley or cross-country
- everything is possible!“



Cabin size
Alcove bed size 198 x 153 cm
Seating area bed size 198 x 97 cm
Length of interior floor 217 cm
Box length 387 cm
Total width 211 cm
Total length 585 cm
Total height 299 cm
Standing height 195 cm
Suitable basis vehicles
Double cabin pick-ups: Ford, Mazda, Nissan (Trail 230), Isuzu, Mitsubishi, VW Amarok (Trail 215)
Box
Modern sandwich construction
Stove-enamelled, smooth aluminium outer membrane
30 mm solid foam insulation
3 mm poplar plywood inner cladding
Multi-coloured exterior design
Accessible roof
SEITZ anti-thermal-bridge double glazed window with mosquito and blackout blind
Double-shell roof covers with mosquito net and blackout
Entrance doors with security lock and mosquito blind
Windows and waste bin
Manual jacks
Plastic washer for supports

Alcove
Aerodynamic alcove, sandwich with 30 mm PU insulation
SEITZ anti-thermal-bridge double glazed window mosquito and blackout blind in the left alcove
Bed with slats and warm air supply
10 cm thick foam mattress, detachable cover with zip
Living area
Decorative coat on interior walls
PVC floor covering
Furniture made of light poplar plywood with modern easy-care coating
Kitchen furnishings and table with durable surface
Winter backrests
8 cm thick padding made of high quality foam
Covers with modern design, detachable zips
Curtains on living area windows
Middle seating area convertible into bed
Forced ventilation on all storage cupboards
Kitchen
Nirosta ignition-safe 2 flame gas hob
Nirosta sink
Dometic, refrigerator RM 8401, 88 l with freezer compartment, 12 V / 230 V / gas operation

Washroom
Washroom with large, fold-away wash basin mirror, lighting, wall cabinet and roof cover
12-V / 230-V facility
CEE input socket with 13A automatic fuse
Energy-saving 12-Volt halogen lighting in the Living area
230-V socket
AGM battery, 12-V 95 Ah with disconnection relay and automatic charger
Shut-off relay for 12-V refrigerator function
Gas appliances
Gas bottle box for 2 x 5 kg gas bottles, accessible from outside
TRUMA SecuMotion safety gas pressure controller for operating the gas system during travel
Shut-off valves for each individual consumer
TRUMA E 2400 gas heating
Water system
Fresh water supply with 2 x 15 l canisters and immersion pump
Waste water tank 45 l as underfloor tank
L equipment
The luxury equipment covers the standard equipment and in addition: warm water system with heating boiler combination «Combi 4», shower, cassette WC «Thetford», fresh water supply with 80 litre tank and pressure pump



Available in two versions.



Interior furnishings 220 with standard equipment

Technical Data
Length: 5850 mm
Width: 2110 mm
Height: 2990 mm



PICK-UP CABINS

TRAIL/BOX 215/230

Both models, TRAIL 215 and TRAIL 230 (with back entry), provide the required living comfort in far-away destinations. The equipment in the living area with warm water system and the latest technology guarantees the best quality.

Both of these models are particularly good for all Japanese pick-ups with a double cabin driver cab. Our beautifully shaped and light box consists of sandwich panels with a stove-enamelled aluminium outer membrane which ensures the highest possible stability and a long service life. With the generously sized filling levels, such as the 80 litre fresh water and 2 x 5 kg gas bottles, even the longest journey becomes a pleasure.



„I always follow my nose, and keep things just as I like them!“



Cabin size

Alcove bed size 198 x 153 cm
Seating area bed size TRAIL 215 198 x 92 cm
Seating area bed size TRAIL 230 198 x 113 cm
Length of interior floor TRAIL 215 215 cm
Length of interior floor TRAIL 230 238 cm
Box length TRAIL 215 379 cm
Box length TRAIL 230 394 cm
Total width 211 cm
Total length TRAIL 215 570 cm
Total length TRAIL 230 585 cm
Total height 299 cm
Standing height 195 cm

Suitable basis vehicles

Ford, Mazda, Nissan (TRAIL 230), Isuzu, Mitsubishi, VW Amarok (TRAIL 215)

Box

Modern sandwich construction
Stove-enamelled, smooth aluminium outer membrane
30 mm solid foam insulation
3 mm poplar plywood inner cladding
Multi-coloured exterior design
Accessible roof
SEITZ anti-thermal-bridge double glazed window with mosquito and blackout blind
Double-shell roof covers with mosquito net and blackout
Entrance doors with security lock and mosquito blind
Windows and waste bin
Manual jacks
Plastic washer for supports



Alcove

Aerodynamic alcove, sandwich with 30 mm PU-insulation
SEITZ anti-thermal-bridge double glazed window mosquito and blackout blind in the left alcove
Bed with slats and warm air supply
10 cm thick foam mattress, detachable cover with zip

Living area

Decorative coat on interior walls
PVC floor covering
Furniture made of light poplar plywood with modern easy-care coating

Kitchen furnishings and table with durable surface
Winter backrests

8 cm thick padding made of high quality foam

Covers with modern design, detachable zips
Curtains on living area windows
Middle seating area convertible into bed
Forced ventilation on all storage cupboards

Kitchen

Nirosta ignition-safe 2 flame gas hob
Nirosta sink
Dometic, refrigerator RM 8401, 88 l with freezer compartment, 12 V / 230 V / gas operation

Washroom

Washroom with large, fold-away wash basin mirror, lighting, wall cabinet and roof cover

12-V / 230-V facility

CEE input socket with 13A automatic fuse
Energy-saving 12-Volt halogen lighting in the Living area
230-V socket

AGM battery, 12-V 95 Ah with disconnection relay and automatic charger

Shut-off relay for 12-V refrigerator function

Gas appliances

Gas bottle box for 2 x 5 kg gas bottles, accessible from outside
TRUMA SecuMotion safety gas pressure controller for operating the gas system during travel
Shut-off valves for each individual consumer
TRUMA E 2400 gas heating

Water system

Fresh water supply with 2 x 15 l canisters and immersion pump
Waste water tank 45 l as underfloor tank

L equipment

The luxury equipment covers the standard equipment and in addition: warm water system with heating boiler combination «Combi 4», shower, cassette WC «Thetford», fresh water supply with 80 litre tank and pressure pump



Available in two versions.



Interior furnishings 215 with L equipment



Interior furnishings 230 with L equipment



PICK-UP CABINS

TRAIL/BOX 240

Our BOX 240 with back entry has a special feature: it can be attached to a basis vehicle with 1.5 cabin and to double cabins. The basis vehicles with the different driver cabs can be exchanged. A lack of space is a thing of the past; the design of the equipment makes overnight stays a pleasure and the perfectly crafted and adapted furniture shows our huge experience in the construction of pick-up cabins.

This removable pick-up cabin was designed for all Japanese pick-ups. The box is made of sandwich parts with a smooth, stove-enamelled outer membrane. The cabin is insulated with 30 mm polystyrene solid foam in the walls, roof and floor. The inner cladding consists of a 3 mm thick coated plywood. The technology used and the careful production ensures the best quality, highest possible stability and guarantees a long service life.



„Breathe deeply
and relax. Wonderful!“



The cabins are fixed to the loading area on the pick-up on four retainers with tension sets or screw threads.

Cabin size

Alcove bed size 200 x 153 cm
Seating area bed size 198 x 113 cm
Length of interior floor 238 cm
Box length 403 cm
Total width 211 cm
Total length (1.5 cabin) 575 cm
Total length (double cabin) 599 cm
Total height
(1.5 cabin/double cabin) 299 cm
Standing height 195 cm

Suitable basis vehicles

Double cabin pick-ups:
Ford, Mazda, Mitsubishi L200 to 2005,
Nissan, Toyota Hilux from 2005

1.5 cabins for pick-ups:
Ford, Mazda, Mitsubishi, Nissan, Isuzu

Box

Modern sandwich construction
Stove-enamelled, smooth aluminium outer membrane
30 mm solid foam insulation
3 mm poplar plywood inner cladding
Multi-coloured exterior design
Accessible roof



SEITZ anti-thermal-bridge double glazed window with mosquito and blackout blind

Double-shell roof covers with mosquito net and blackout

Entrance doors with security lock and mosquito blind
Windows and waste bin

Manual jacks

Plastic washer for supports

Alcove

Alcove, sandwich with 30 mm solid foam

SEITZ anti-thermal-bridge double glazed window
mosquito and blackout blind in the left alcove

Bed with slats and warm air supply

10 cm thick foam mattress,
detachable cover with zip

Living area

Decorative coat on interior walls

PVC floor covering

Furniture made of light poplar plywood with modern
easy-care coating

Kitchen furnishings and table with durable
surface

Winter backrests

8 cm thick padding made of high quality foam

Covers with modern design,
detachable zips

Curtains on living area windows

Middle seating area convertible into bed

Forced ventilation on all storage cupboards

Kitchen

Nirosta ignition-safe 2 flame gas hob

Nirosta sink

Dometic, refrigerator RM 8401, 88 l with freezer
compartment, 12 V / 230 V / gas operation

Washroom

Washroom with large, fold-away wash basin
mirror, lighting, wall cabinet and roof cover

12-V / 230-V facility

CEE input socket with 13A automatic fuse

Energy-saving 12-Volt halogen lighting in the
Living area

230-V socket

AGM battery, 12-V 95 Ah with disconnection relay
and automatic charger

Shut-off relay for 12-V refrigerator function

Gas appliances

Gas bottle box for 2 x 5 kg gas bottles,
accessible from outside

TRUMA SecuMotion safety gas pressure controller for
operating the gas system during travel

Shut-off valves for each individual consumer

TRUMA E 2400 gas heating

L equipment

The luxury equipment covers the standard equipment
and in addition: warm water system with heating
boiler combination «Combi 4», shower, cassette WC
«Thetford», fresh water supply with 80 litre tank
and pressure pump



Available in two
versions.



Interior furnishings
240 with L equip-
ment



PICK-UP CABINS **TRAIL/BOX 260S**

No prayers are left unanswered. The range of use is wider than it looks. Our TRAIL 260 and TRAIL 260S (with side entry) offer the optimum in comfort and space for up to 4 people and also offer the option of being transported with a spacious pickup with a 1.5 driver cab.

The available space in the pick-up cabin offers sufficient living space for 4 people and is designed for basis vehicles with a large driver cab in which two other people, in addition to the driver and front passenger, have space for the next trip.



„Put your feet up
and relax after an
active day.“



Cabin Size

Alcove bed size 198 x 153 cm
Seating area bed size 198 x 120 cm
Length of interior floor 260 cm
Box length 424 cm
Total width 211 cm
Total length 599 cm
Total height 299 cm
Standing height 195 cm

Suitable basis vehicles

1.5 cabins for pick-ups:
Ford, Mazda, Mitsubishi, Isuzu, Nissan

Box

Modern sandwich construction
Stove-enamelled, smooth aluminium outer membrane
30 mm solid foam insulation
3 mm poplar plywood inner cladding
Multi-coloured exterior design
Accessible roof
EITZ anti-thermal-bridge double glazed window with mosquito and blackout blind
Double-shell roof covers with mosquito net and blackout
Entrance doors with security lock and mosquito blind
Windows and waste bin
Manual jacks
Plastic washer for supports

Alcove

Aerodynamic alcove, sandwich with 30 mm PU insulation
EITZ anti-thermal-bridge double glazed window mosquito and blackout blind in the left alcove
Bed with slats and warm air supply
10 cm thick foam mattress, detachable cover with zip

Living area

Decorative coat on interior walls
PVC floor covering
Furniture made of light poplar plywood with modern easy-care coating
Kitchen furnishings and table with durable surface
Winter backrests
8 cm thick padding made of high quality foam
Covers with modern design, detachable with zips
Curtains on living area windows
Middle seating area convertible into bed
Forced ventilation on all storage cupboards

Kitchen

Nirosta ignition-safe 2 flame gas hob
Nirosta sink
Dometic, refrigerator RM 8401, 88 l with freezer compartment, 12 V / 230 V / gas operation

Washroom

Washroom with large, fold-away wash basin mirror, lighting, wall cabinet and roof cover

12-V / 230-V facility

CEE input socket with 13A automatic fuse
Energy-saving 12-Volt halogen lighting in the Living area
230-V socket
AGM battery, 12-V 95 Ah with disconnection relay and automatic charger
Shut-off relay for 12-V refrigerator function

Gas appliances

Gas bottle box for 2 x 5 kg gas bottles, accessible from outside
TRUMA SecuMotion safety gas pressure controller for operating the gas system during travel
Shut-off valves for each individual consumer
TRUMA E 2400 gas heating

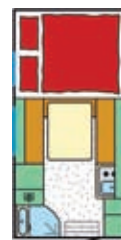
Water system

Fresh water supply with 2 x 15 l canisters and immersion pump
Waste water tank 45 l as underfloor tank

L equipment

The luxury equipment covers the standard equipment and in addition: warm water system with heating boiler combination «Combi 4», shower, cassette WC «Thetford», fresh water supply with 80 litre tank and pressure pump

Available in two versions.



Interior furnishings
260 with
L equipment



Interior furnishings
260 S with
L equipment



PICK-UP CABINS **TRAIL/BOX 260RS**

Robust yet comfortable – that is our Trail 260RS. A long trip is relaxing and soothing in this pick-up cabin - even if the trip takes you off-road or far away from civilisation.

This pick-up cabin has been specially designed for the robust and durable basis vehicle, the Land Rover Defender 130, and has therefore been adapted especially to the higher driver cab. Although these cabins generally correspond with the TRAIL 260, an additional height of 19 cm is achieved by adaptation to the driver cab of the Land Rover Defender. The resulting generous interior space allows lots of room for storage and a comfortable standing height of 212 cm. Models 200 and 240 are also available for the Land Rover Defender at an extra charge.



„Even if the going gets rough - nothing can stop me.“



Exterior light

Available in two versions.

Cabin size

Alcove bed size 198 x 153 cm
Seating area bed size 198 x 120 cm
Length of interior floor 260 cm
Box length 424 cm
Total width 211 cm
Total length 610 cm
Total height 315 cm
Standing height 212 cm

Suitable basis vehicles

Land Rover Defender 130

Box

Modern sandwich construction
Stove-enamelled, smooth aluminium outer membrane
30 mm solid foam insulation
3 mm poplar plywood inner cladding
Multi-coloured exterior design
Accessible roof
SEITZ anti-thermal-bridge double glazed window with mosquito and blackout blind
Double-shell roof covers with mosquito net and blackout
Entrance doors with security lock and mosquito blind
Windows and waste bin
Manual jacks
Plastic washer for supports

Alcove

Aerodynamic alcove, sandwich with 30 mm PU insulation
SEITZ anti-thermal-bridge double glazed window mosquito and blackout blind in the left alcove
Bed with slats and warm air supply
10 cm thick foam mattress, detachable cover with zip

Living area

Decorative coat on interior walls
PVC floor covering
Furniture made of light poplar plywood with modern easy-care coating
Kitchen furnishings and table with durable surface
Winter backrests
8 cm thick padding made of high quality foam
Covers with modern design, detachable zips
Curtains on living area windows
Middle seating area convertible into bed
Forced ventilation on all storage cupboards

Kitchen

Nirosta ignition-safe 2 flame gas hob
Nirosta sink
Dometic, refrigerator RM 8401, 88 l with freezer compartment, 12 V / 230 V / gas operation
Pivoting halogen lighting

Washroom

Washroom with large, fold-away wash basin mirror, lighting, wall cabinet and roof cover

12-V / 230-V facility

CEE input socket with 13A automatic fuse
Energy-saving 12-Volt halogen lighting in the Living area
230-V socket
AGM battery, 12-V 95 Ah with disconnection relay and automatic charger
Shut-off relay for 12-V refrigerator function

Gas appliances

Gas bottle box for 2 x 5 kg gas bottles, accessible from outside
TRUMA SecuMotion safety gas pressure controller for operating the gas system during travel
Shut-off valves for each individual consumer
TRUMA E 2400 gas heating

Water system

Fresh water supply with 2 x 15 l canisters and immersion pump
Waste water tank 45 l as underfloor tank

L equipment

The luxury equipment covers the standard equipment and in addition: warm water system with heating boiler combination «Combi 4», shower, cassette WC «Theftford», fresh water supply with 80 litre tank and pressure pump



Interior furnishings
260 R with
L equipment



Interior furnishings
260 RS with
L equipment



PICK-UP CABINS **TRAIL/BOX 260SD**

A holiday apartment for two: that is our pick-up cabin TRAIL 260SD. The available space including seated dining area, lots of storage space in the living area and a comfortable wash room with shower allows relaxing trips and holidays wherever you like.

There is also additional storage space in the back where the camping chairs and a table (standard features) are accommodated. With the 100 litre fresh water tank, 50 litre waste water tank and 2 x 5 kg gas bottles, very long journeys are possible too.

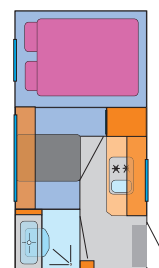
This box is also produced with sandwich panels. The insulation is made of polystyrene solid foam 30 mm panels in the walls, roof and floor. The highest possible stability and service life is guaranteed by the latest technology.



„Drive off spontaneously and find the best views. A real luxury.“



Available in two versions.



Interior furnishings
260 R with
L equipment

Cabin size

Alcove bed size 198 x 153 cm
Seating area bed size 186 x 96 cm
Length of interior floor 269 cm
Box length 414 cm
Total width 211 cm
Total length 617 cm
Total height 299 cm
Standing height 195 cm

Suitable basis vehicles

Land Rover Defender 130
1.5 cabin for pick-ups: Ford, Mazda, Nissan

Box

Modern sandwich construction
Stove-enamelled, smooth aluminium outer membrane
30 mm solid foam insulation
3 mm poplar plywood inner cladding
Multi-coloured exterior design
Accessible roof
SEITZ anti-thermal-bridge double glazed window with mosquito and blackout blind
Double-shell roof covers with mosquito net and blackout
Entrance doors with security lock and mosquito blind
Windows and waste bin
Manual jacks
Plastic washer for supports

Alcove

Alcove, sandwich with 30 mm solid foam
SEITZ anti-thermal-bridge double glazed window
mosquito and blackout blind in the left alcove
Bed with slats and warm air supply
10 cm thick foam mattress,
detachable cover with zip

Living area

Decorative coat on interior walls
PVC floor covering
Furniture made of light poplar plywood with modern
easy-care coating

Kitchen furnishings and table with durable
surface

Winter backrests

8 cm thick padding made of high quality
foam

Covers with modern design,
detachable zips

Curtains on living area windows

Middle seating area convertible into bed

Forced ventilation on all storage cupboards

Kitchen

Nirosta ignition-safe 2 flame gas hob

Nirosta sink

Dometic, refrigerator RM 8401, 88 l with
freezer compartment, 12 V / 230 V / gas operation
Pivoting halogen lighting

Washroom

Washroom with large, fold-away wash basin
mirror, lighting, wall cabinet and roof cover

12-V / 230-V facility

CEE input socket with 13A automatic fuse

Energy-saving 12-Volt halogen lighting in the
Living area

230-V socket

AGM battery, 12-V 95 Ah with disconnection relay
and automatic charger

Shut-off relay for 12-V refrigerator function

Gas appliances

Gas bottle box for 2 x 5 kg gas bottles,
accessible from outside

TRUMA SecuMotion safety gas pressure controller for
operating the gas system during travel

Shut-off valves for each individual consumer

Water system

Warm water system with heating boiler combination
«Combi 4», shower, cassette WC «Thetford», fresh
water supply with 100 litre tank and pressure pump
Waste water tank 50 l insulated and heated



PICK-UP CABINS **TRAIL/BOX 275 S**

Family holiday with a pick-up? Not possible? Of course it is. Our pick-up cabin, the BOX 275 S, is the mobile holiday apartment for a family of four. Developed especially for the large „1500“ full-size pick-ups, the BOX 275 S offers comfortable living and a generous amount of space.

The spacious pick-up cabin is suitable for American pick-ups with a six-foot loading space. Due to the high performance of the basis vehicles and the large driver cab, a holiday with the whole family or as a group is possible with the American pickups without having to do without holiday enjoyment and living comfort. The Trail 305 S pick-up cabin is suitable for American pick-ups with a 2500 chassis.



„I'm excited to see how the neighbours react.“



Available in two versions.



Interior furnishings
305 S with
L equipment



Interior furnishings
275 S with
L equipment

Cabin size

Alcove bed size 213 x 153 cm
Seating area bed size 210 x 143 cm
Length of interior floor 275 cm
Box length 454 cm
Total width 227 cm
Total length 645 cm
Total height 305 cm
Standing height 200 cm

Suitable basis vehicles

Chevrolet, Dodge RAM, Ford F-Serie, Toyota Tundra

Box

Modern sandwich construction
Stove-enamelled, smooth aluminium outer membrane
30 mm solid foam insulation
3 mm poplar plywood inner cladding
Multi-coloured exterior design
Accessible roof
SEITZ anti-thermal-bridge double glazed window with mosquito and blackout blind
Double-shell roof covers with mosquito net and blackout
Entrance doors with security lock and mosquito blind
Windows and waste bin
Manual jacks
Plastic washer for supports

Alcove

Aerodynamic alcove, sandwich with 30 mm PU insulation
SEITZ anti-thermal-bridge double glazed window mosquito and blackout blind in the left alcove
Bed with slats and warm air supply
10 cm thick foam mattress, detachable cover with zip

Living area

Decorative coat on interior walls
PVC floor covering
Furniture made of light poplar plywood with modern easy-care coating
Kitchen furnishings and table with durable surface
Winter backrests
8 cm thick padding made of high quality foam
Covers with modern design, detachable with zips
Curtains on living area windows
Middle seating area convertible into bed
Forced ventilation on all storage cupboards

Kitchen

Nirosta ignition-safe 2 flame gas hob
Nirosta sink
Dometic, refrigerator RM 8401, 88 l with freezer compartment, 12 V / 230 V / gas operation

Washroom

Washroom with large, fold-away wash basin mirror, lighting, wall cabinet and roof cover Separate shower room with 2 folding doors (only in cabin 305)

12-V / 230-V facility

CEE input socket with 13A automatic fuse
Energy-saving 12-Volt halogen lighting in the Living area
230-V socket
AGM battery, 12-V 95 Ah with disconnection relay and automatic charger
Shut-off relay for 12-V refrigerator function

Gas appliances

Gas bottle box for 2 x 5 kg gas bottles, accessible from outside
TRUMA SecuMotion safety gas pressure controller for operating the gas system during travel
Shut-off valves for each individual consumer
TRUMA E 2400 gas heating

Water system

Fresh water supply with 2 x 15 l canisters and immersion pump
Waste water tank 45 l as underfloor tank

L equipment

The luxury equipment covers the standard equipment and in addition: warm water system with heating boiler combination «Combi 4», shower, cassette WC «Thetford», fresh water supply with 97 litre tank and pressure pump



PICK-UP CABINS

TRAIL/BOX 280/280S

The TRAIL 280 with back entry and the 280S with side entry offer lots of space as well as living and driving comfort. For example, the walls are simply removed from a VW platform truck double cabin and the TRAIL 280 is attached. This means the pick-up cabin has enough space for 4 to 5 people.

An opening through to the driver cab can even be installed by changing the backrest on the back seat. The opening to the cabin is quickly and simply closed using a door and plastic panel. This means that the basis vehicle continues to be available for private or commercial use.



*„Uncomplicated and spontaneous.
Just like us!“*



Cabin size

Alcove bed size 208 x 153 cm
Seating area bed size 205 x 132 cm
Length of interior floor 280 cm
Box length 444 cm
Total width 218 cm
Total length 615 cm
Total height 307 cm
Standing height 203 cm

Suitable basis vehicles

VW T4/ T5 individual cabin, short wheelbase
VW T4 / T5 double cabin

Box

Modern sandwich construction
Stove-enamelled, smooth aluminium outer membrane
30 mm solid foam insulation
3 mm poplar plywood inner cladding
Multi-coloured exterior design
Accessible roof

SEITZ anti-thermal-bridge double glazed window with mosquito and blackout blind

Double-shell roof covers with mosquito net and blackout

Entrance doors with security lock and mosquito blind
Windows and waste bin

Manual jacks
Plastic washer for supports

Alcove

Aerodynamic alcove, sandwich with 30 mm PU insulation

SEITZ anti-thermal-bridge double glazed window mosquito and blackout blind in the left alcove

Bed with slats and warm air supply
10 cm thick foam mattress, detachable cover with zip

Living area

Decorative coat on interior walls
PVC floor covering

Furniture made of light poplar plywood with modern easy-care coating

Kitchen furnishings and table with durable surface

Winter backrests

8 cm thick padding made of high quality foam

Covers with modern design, detachable zips

Curtains on living area windows

Middle seating area convertible into bed

Forced ventilation on all storage cupboards

Kitchen

Nirosta ignition-safe 2 flame gas hob

Nirosta sink

Dometic, refrigerator RM 8401, 88 l with freezer compartment, 12 V / 230 V / gas operation

Washroom

Washroom with large, fold-away wash basin mirror, lighting, wall cabinet and roof cover
Separate shower room with 2 folding doors

12-V / 230-V facility

CEE input socket with 13A automatic fuse

Energy-saving 12-Volt halogen lighting in the Living area

230-V socket

AGM battery, 12-V 95 Ah with disconnection relay and automatic charger

Shut-off relay for 12-V refrigerator function

Gas appliances

Gas bottle box for 2 x 5 kg gas bottles, accessible from outside

TRUMA SecuMotion safety gas pressure controller for operating the gas system during travel

Shut-off valves for each individual consumer

TRUMA E 2400 gas heating

Water system

Fresh water supply with 2 x 15 l canisters and immersion pump

Waste water tank 45 l as underfloor tank

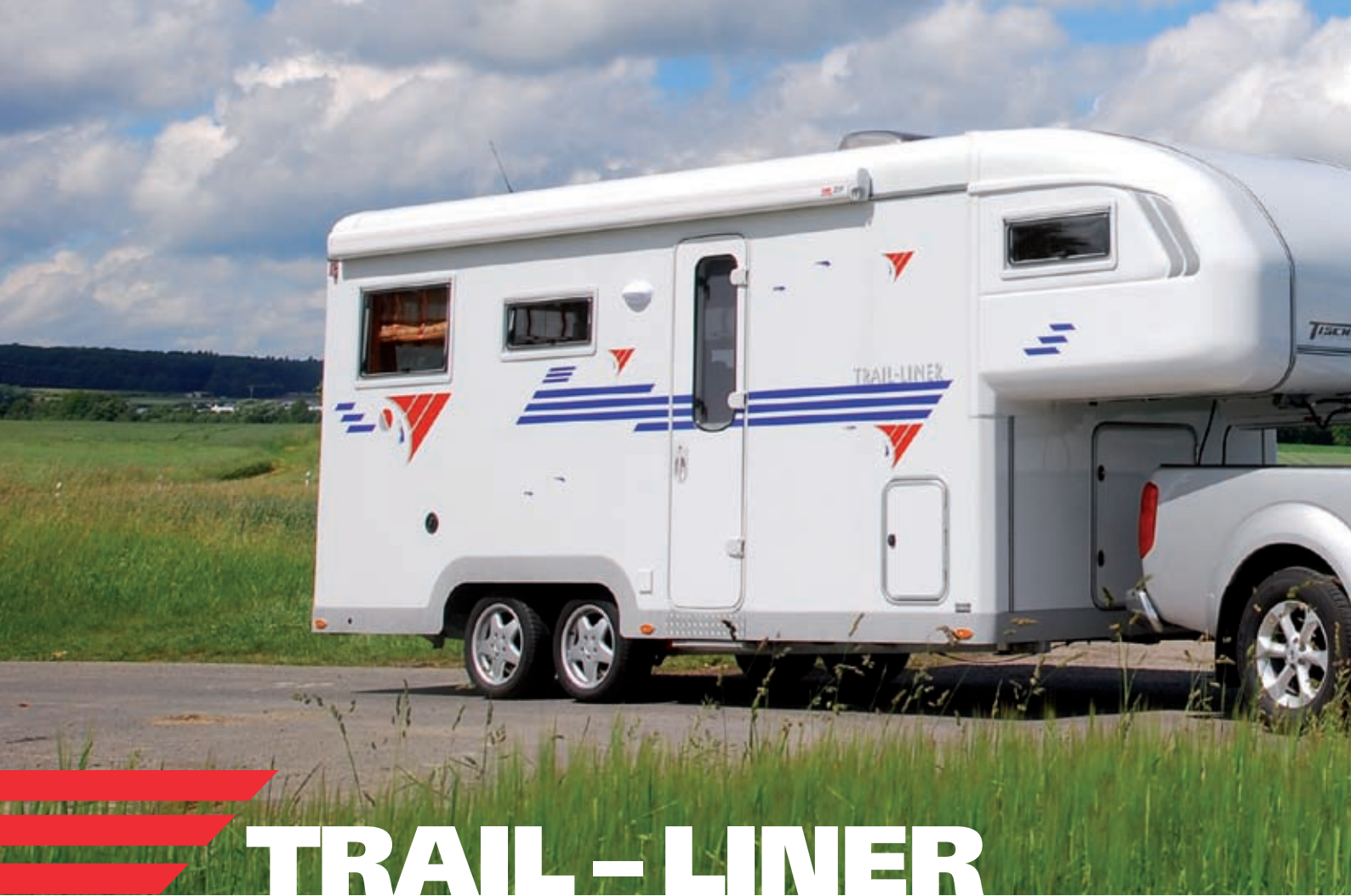
L equipment

The luxury equipment covers the standard equipment and in addition: warm water system with heating boiler combination «Combi 4», shower, cassette WC «Thetford», fresh water supply with 97 litre tank and pressure pump

Available in two versions.



Interior furnishings 280 S with L equipment



TRAIL-LINER

THE LUXURIOUS TYPE OF MOBILE TRAVEL

Comfortable living, safe driving and absolute flexibility at the holiday destination – all of this is offered by our new model, the TRAIL-Liner. Developing a motorhome as a 5th wheel trailer was the logical consequence of our almost 40 years of experience in the area of designing and producing pick-up cabins.

Technical Data

Total length: from 4.00 m to 5.50 m

Total length including gooseneck: from 5.50 m to 7.00 m

Box width: from 2.10 m to 2.40 m

Box height: from 3.00 m to 3.50 m depending on the basis vehicle

In addition, the demand for generous living comfort at the holiday destination and the independence of a pick-up cabin is very high. The resulting a 5th wheel trailer is aligned to European road conditions in its size and is suitable for the basis vehicles known on the European market. With our experience and the „Made in Germany“ quality, there's nothing left in the way of new dimensions in mobile travel.

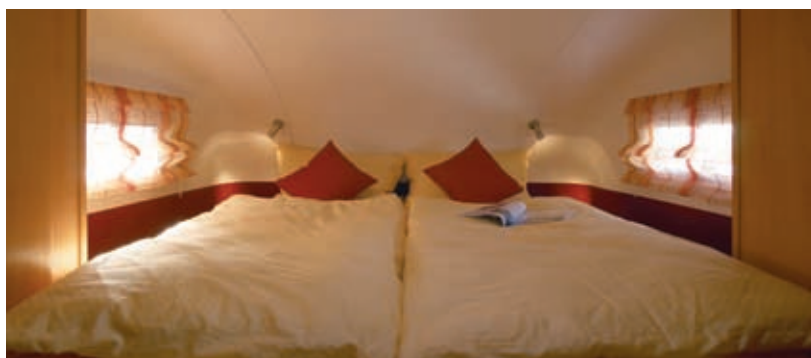
Empty weight: from 1,600 kg to 2,000 kg depending on the box length and equipment.

Authorised total weight: from 2,600 kg to 3,500 kg, depending on the equipment and maximum possible total drawing weight of the drawing vehicle.





„More luxury? I certainly wouldn't mind, but it needs to be flexible.“



Box

Modern sandwich construction
Stove-enamelled, smooth aluminium outer membrane
30 mm solid foam insulation
3 mm poplar plywood inner cladding
Accessible roof
SEITZ/Dometic anti-thermal-bridge double glazed window with mosquito net and blackout
Double-wall, insulated GFK moulded parts
Insulated, heatable double floor with integrated fresh and waste water tank (250/200 L) over the axles
Large storage space in the back and front. Trunk lid as access to all storage spaces (double floor, back and front), gas bottle box and cassette WC with lock.

Living area

Decorative coat on interior walls
PVC floor covering
Furniture made of light poplar plywood with modern easy-care coating
Cupboards with sturdy furniture handles and safe closing mechanisms
Kitchen furnishings and freestanding table with durable surface
Winter backrests
12 cm thick padding made of high quality foam (optimal formed padding)
Covers with modern design, detachable with zips
Curtains on living area windows
Back seating area for conversion into a bed as an option

Sleeping area

Large, heated double bed
200 x 160 cm or 2 single beds 200 x 90 with FROLI-Star slats
Storage space, shelf options
2 reading lamps
One window on the left and right

Kitchen

Large working surface with high-quality mineral worktop
Ignition-safe 3 flame gas hob with electronic ignition
Sink with integrated glass plate
Single lever mixer tap
Dometic refrigerator RMD 8505, 150 litres with Separate freezer compartment, 25 litres, operated with 12 Volt, 230 Volt and gas
Storage space, wall cabinets and shelf

Washroom/shower

Separate shower opposite living area
Cabinet with high-quality mineral board
Stainless steel washbasin with a single lever mixer tap
Mirror
Wall cabinet
Cassette WC Thetford C403
Shower tray 80 x 70 cm
Sliding shower door
High-quality spray fitting with single lever mixer tap


Technology/gas system/water supplier/heating

12 Volt lighting
230 Volt system

Board control system
2 AGM batteries 95 AH
Freshwater/wastewater tank 250/200 litres, insulated and heated
Truma Kombi 6 heating/warm water unit
Gas bottle box for 2 x 11 kg gas bottles
Truma Secumotion gas controller system with Duocomfort

Individual equipment/options

Layout according to your specifications
Ready laid laminate parquet
Truma Kombi 6 heating with 230 volt operation
Alde Compact warm water heating
Underfloor heating
Waeco MDC 110 compressor refrigerator
Microwave
Ceramic toilet with fixed tank and slide valve
Aluminium trims



*„It couldn't be more flexible:
the cabin is on within 20 minutes
and off you go!“*

ACHIM VÄTH, VEHICLE MECHANIC AT TISCHER

CABIN BOX SERVICE

You don't need to be an expert to attach or remove the cabin. With the help of extending supports, it's very easy and you can manage it within 20 minutes with a little practice.

To take the cabin off, you only need to loosen the retainers between the cabin and the pick-up and lower the four jacks. The jacks are lowered to the ground with a crank, or a battery-powered or electric screwdriver. Extend a little further until the cabin comes away from the vehicle. Now you can drive forwards with the pick-up and lower the cabin down a little more for convenient entry.

Attachment works in exactly the same way but in the reverse order: raise the cabin so that the pick-up fits underneath. Then drive the vehicle under the cabin - you need a little patience at first but you will soon have the knack. Now lower the cabin again, tighten the retainers, insert the 12 V plug and retract the supports. It isn't witchcraft, is it?





OUR GUARANTEE AND OUR SERVICE PROMISE

We write Service with a capital S. We are always at your side with help and advice. We are also well equipped to provide full assistance. Alongside our attachment cabins, we recommend and sell the right pickups for your requirements. We can offer you all of the common pick-up vehicle models. You are completely taken care of and supplied with the right vehicle! We give a six-year warranty on the outer membrane. One condition is a leak test after three years so that you can enjoy your TISCHER cabin for a long time!

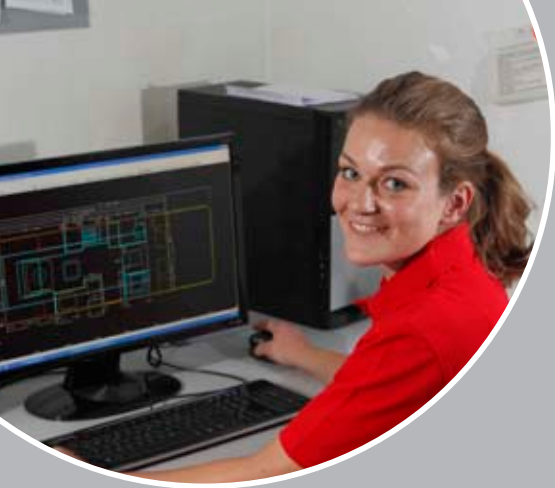
INTERIORS SERVICE

We attach great importance to our interior features – we want you to feel happy on holiday after all! We put a lot of hard work into planning our interiors. All of the important things should be in the right place, within reach and intuitive. At the same time, we want to offer you the freedom of attractive surfaces and cosy seating. Although it sounds like trying to square the circle, I think we've managed it quite well. We are particularly proud of details such as the large foldaway washbasin in the wet cell.

„It should be space-saving and cosy. We are always working on it!“

ERWIN BARTSCH, INTERIOR PLANNER AT TISCHER





„The walls, roof and floor of the cabin are built like a sandwich.“

THEA HASELOFF, CONSTRUCTOR AT TISCHER

CONSTRUCTION SERVICE

We personally manufacture the individual elements the TISCHER cabins are made of. We use aluminium sheet metal, solid foam and interior plywood boards applied under pressure to the whole surface. This creates a sandwich material which is light and extremely sturdy and durable at the same time. Individual panels are glued together and screw connected into a box shape. The walls and roof are 34 mm thick and the floor is 41 mm. The material has the best insulation values and is easy to repair in case of any damages.

We can fill little damages in the outer membrane of your cabin and repaint it. We simply replace the individual sandwich elements for larger damages.



ANGULAR ROUND ALCOVE TWO BOX VERSIONS



BOX-VERSION

The BOX-Version is a simpler, less expensive but just as high quality cabin. The structure of the wall with the sandwich panels with 30 mm solid foam insulation and a smooth aluminium outer membrane is identical to the TRAIL-Version. Due to the square construction, the cabin appears to be larger and does not have the excellent aerodynamics of the TRAIL-Version.



TRAIL-VERSION

Two double walled, foam filled GFK moulding parts are used for the round Alcove that form the corners of the Alcove and the back. With these parts and the round sandwich roof and sidewall transition points, a beautifully shaped and modern structure is created. The front and back connections are also rounded without the use of a frame. This cabin concept creates excellent aerodynamics that is not only noticed in the consumption of diesel.



„Our loading surface coating from Rhino Linings offers perfect protection including anti-slip effect and noise absorption.“

ALEXANDER FRIESEN, SERVICE EMPLOYEE AT TISCHER

LOADING AREA COATING SERVICE

Another service we provide is a spray coating on platforms and loading surfaces. Rhino Linings is a company from the USA which has been using polyurethane to coat truck loading surfaces since 1988. The air and water impermeable material is an excellent alternative to the standard loose surface cladding. The high level of satisfaction among customers with this product is still noticed years later. Alongside excellent resistance to slipping and the absorption of noise, coatings from Rhino Linings provide a permanent good look.

SPARE PARTS SERVICE



It goes without saying that we are available with our service after the purchase of TISCHER cabin. If you require assistance from one of our service employees, a phone call is usually enough. Individual and spare parts can generally be procured within one week. We already have many of them available from stock.

„Individual and spare parts can generally be procured within one week. This is something we are particularly proud of.“

PAUL BÜHLMANN, SERVICE EMPLOYEE AT TISCHER

OPERATING INSTRUCTIONS

Once your cabin has been purchased and handed over, you receive a truly comprehensive book with our operating instructions for your cabin and all operating manuals for the technical equipment and installations. With these instructions for use, you are capable of helping yourself when something doesn't work in the right way. Wherever you are in the world and whether calling us as possible, you will always have initial assistance and instructions for your own repairs. We achieved an exceptional acceptance level in the area of pickup cabins with these instructions put together especially for our customers. We only want the best for our customers!

„Help is always on hand with our unique, comprehensive operating instructions.“

THOMAS KLEIN, SALES MANAGER AT TISCHER





INDIVIDUAL VEHICLES CUSTOMISATIONS



STANDARD & L EQUIPMENT SERVICE



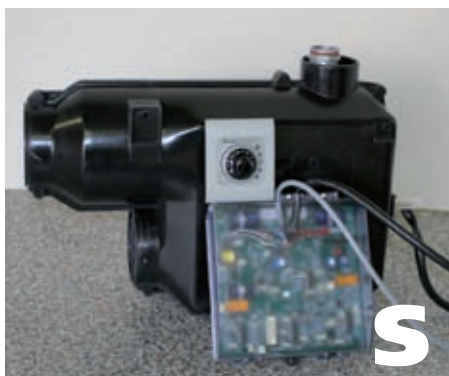
Entrance doors with security lock and mosquito blind
Windows and waste bin



On-board control system for fresh/waste water tank,
Box/vehicle battery, 12 V main switch and
water pump switch (not on TRAIL / BOX 200)



Dometic RM 8401 L, 88 litre absorber refrigerator
(Included as standard in TRAIL / BOX 200)



Truma E-2400
(Included as standard in TRAIL / BOX 200)



Mini Heki



SecuMotion gas controller



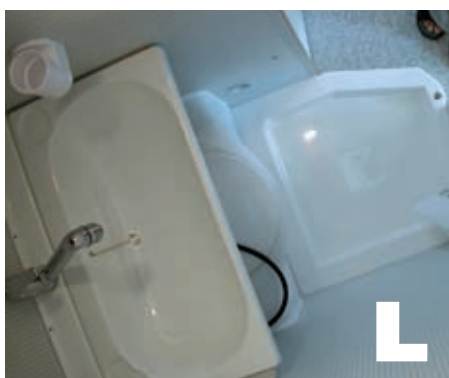
Bed with slats and warm air supply
(No warm air channelling on TRAIL / BOX 200)



Fold-away wash basin (not in TRAIL / BOX 200)



2 x 15 litre canisters



Washroom with shower tray and cassette toilet



Truma Combi 4 heating



80 litre fresh water tank

OVERVIEW OF ACCESSORIES



Roof carrier system with ladders



Left or right canopy, 3 m



Seitz-Heki 1 panorama roof opening



Insulated and heated waste water tank



Solar system consisting of a 75-W module, charge current controller



Radio/CD, stereo with antenna and 2 loudspeakers



Satellite system with receiver



Electric supports



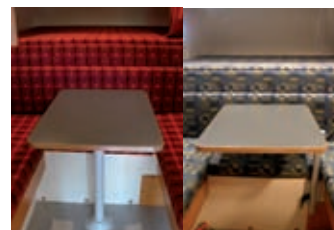
Installation of additional 230 V socket or installation of 12 V socket



Additional folding worktop or shelf



Cooker and sink unit, 3-flame with electronic ignition and 2 section glass cover



Aluminium pivoting table (right illustration) instead of single column table leg (left illustration)



Digital board control system with outside And inside temperature display, clock and optional exterior light switch



SOG toilet ventilation



Entry step



Folding or fixed bicycle carrier for 2 bicycles



Alcove wall cabinets on the left or right with shelf board



Compressor refrigerator Coolmatic MDC 90, 90 Litre



Electric access step with 2 rungs, 12 V



LED package (LED lighting, additional lighting in wall cabinets, dimmable seating lighting)



Froli Star and other mattresses



Truma DuoComfort gas control system



Outside shower

SUITABLE BASIS VEHICLES SERVICE



DOUBLE CABIN

Number of doors: 4

Number of seat rows: 2

Basis vehicles with shorter loading areas.

Generally suitable for attachment cabins with a floor length of approx. 200 to 240 cm.



1.5 CABINS

Number of doors: 2

Number of rows of seats: 1 and short row of seats at the back

Basis vehicles with medium loading areas.

Generally suitable for attachment cabins with a floor length of approx. 200 to 260 cm.



DOUBLE CABIN

Anzahl Türen: 4

Anzahl Sitzreihen: 2

Basisfahrzeuge mit Ladeflächen. In der Regel geeignet für Absetzkabinen mit einer Bodenlänge ab ca. 280 cm.

Basis vehicle	Basis vehicle	Length of loading surface	TRAIL & BOX pickup cabins								Additional information	
			200	215	220	230	240	260	260 R	305 275		280
Chevrolet C/K-Serie	2500 short-box	180.0 cm								■		
	2500 long-box	210.0 cm								■		
Dodge RAM	short-box	201.5 cm								■		
	long-box	248.0 cm								■		
Fiat Strada	1.5 (long cabin)	147.2 cm	■									Low loading weight
	Single (short cabin)	177.0 cm	■									Only for light cabins
Ford F-Serie	short-box	200.0 cm								■		
	long-box	240.0 cm								■		
Ford Ranger	Doubel (Double Cab)	153.0 cm	■	■	■	■	■					
	1.5 (Extra Cab)	175.3 cm	■				■	■				
Land Rover Defender	130 doubel (Double Cab)	166.8 cm	□ (1)				□ (1)		■			(1) Customisation
	110 single (Pick Up)	201.0 cm							□ (1)			Surcharge applies
Mazda	Doubel (Double Cab)	153.0 cm	■	■	■	■	■					
	1.5 (Stretch Cab)	175.5 cm	■				■	■				
Mitsubishi	Double (Double Cab)	150 cm (2)	■	■	■	■	■					(2) Models up to year 2005
	Double (Double Cab)	132 cm (3)	■	■	■							(3) Models from year 2006
	1.5 (Club Cab)	183.0 cm	■				■	■				
Nissan Pickup	Double (Double Cab)	139.5 cm (2)	■									(2) Models up to year 2005
	Double (Double Cab)	151.0 cm (3)	■	■ (4)	■ (4)	■ (4)	■ (4)					(3) Models from year 2006
	1.5 (King Cab)	186.5 cm	■				■	■				(4) Only possible with loading in Germany
Isuzu	Double (Mannschaftskab.)	138.0 cm	■	■	■							
	1.5 (Space Cab)	180.0 cm	■				■	■				
Toyota Hilux	Double (Double Cab)	135.5 cm (2)	■									
	Double (Double Cab)	152.0 cm (3)	■	■ (4)	■ (4)	■ (4)	■ (4)					(2) Models up to year 2005
	1.5 (Xtra Cab)	180.5 cm	■				■ (4)	■ (4)				(3) Models from year 2006
VW T4/T5	Double										■	loading in Germany
	Single, short wheelbase										■	
VW Amarok	Double (Double Cab)	155.0 cm	■	■	■							

TISCHER cabins can be used on lots more vehicles. This list is not complete. All details are provided without liability.

This list is only valid for Germany. Please contact your retailer directly for other countries.

TISCHER
FREIZEITFAHRZEUGE



agentur: moser kommuniziert. www.moserkomm.de



TISCHER GMBH FREIZEITFAHRZEUGE

Frankenstrasse 3 · D-97892 Kreuzwertheim · Industriegebiet Wiebelbach

Tel. (00)49 (0)9342/8159 · Fax (00)49 (0)9342/5089

Internet: www.tischer-pickup.com · E-Mail: info@tischer-pickup.com