

# Adventurer



## Why Adventurer?

- Four spacious floorplans
- TrueAir® Maximum Comfort A/C
- Swivel Ultraleather™ cab seats
- Available Infotainment Center with Rand McNally RV GPS
- MCD solar/blackout roller shades
- LED ceiling lights
- Corian® countertops
- Spacious bedroom and master bath (37F)
- Available stylish Contour windows



On the cover: 38Q Black Walnut Full-Body Paint

38Q Silver Birch with Coffee-Glazed Vienna Maple Cabinetry

## The Class A Motorhome You've Always Wanted

Diesel-pusher style and luxury without the diesel-pusher price—that is the promise of the Winnebago Adventurer.® Choose from four floorplans, including the new triple-slideout 38Q with multiple HDTVs and a front lounge with sectional sofa. As our flagship Class A gas coach, you can expect deluxe, user-friendly features around every corner,

such as Ultraleather™ furniture, MCD solar/blackout roller shades, and LED lighting that saves energy while you travel. Standard full-body paint, a redesigned front cap, and an optional upgrade to dual-pane Contour windows deliver a striking look. Make the most of your Class A lifestyle in the Winnebago Adventurer.



**Recognized Quality** The RV Dealers Association bestows its annual Quality Circle Award based on dealer ratings to the manufacturers that provide exceptional products, service and support. Only one manufacturer has received this honor for seventeen consecutive years: Winnebago Industries.®



## Best in Class

See how Winnebago Industries takes motorhome design and function to the next level, and why we've earned the right to be called the Most Recognized Name in Motorhomes.®



Click on this icon throughout the brochure to link to more information on the web.



The **OnePlace® Systems Center** lets you monitor and control key systems from one convenient location.



Choose a set of two plush **Ottomans** for extra storage and seating or to rest your legs while relaxing on your sofa (38Q).



With a simple switch you can quickly convert your **Rest Easy® Sofa** into a comfortable, contoured bed.



**Full-Extension Drawer Slides** make it easy to open drawers wide and maximize their storage space.



Adjust your preferred light and privacy settings with the smooth-operating **MCD Solar/Blackout Roller Shades**.



The available **Infotainment Center with Rand McNally RV GPS** offers turn-by-turn voice guidance and more.





38Q Silver Birch with Coffee-Glazed Vienna Maple Cabinetry

From lively game nights to quiet evenings, the spacious front lounge is designed to accommodate almost any event with premium features including a Rest Easy® sofa, Ultraleather™ furniture, and a large HDTV with a Blu-Ray™ Home Theater Sound System. Our TrueAir® Maximum Comfort air conditioning system, with two cooling units and twin heat pumps, contributes to your total comfort no matter the temperature. The available Contour windows offer a more stylish appearance with even better wind noise reduction.



Euro Recliner



38Q Rest Easy Extendable Sectional Sofa





38Q Galley

With Corian® solid-surface countertops, extensive cabinet space, and a flip-up countertop extension that provides an abundance of workspace, this L-shaped galley offers perfect flow with plenty of room to create, cook, and share delicious meals. Select from a variety of stylish cabinet finishes for the look you prefer.



Pantry with Pull-Out Shelves



38Q French Door Residential Refrigerator



38Q Glide-Out Freezer Drawer



With options ranging from the comfortable U-shaped dinette (32H) and popular BenchMark® full comfort dinette with additional storage (35P), to the elegant dining table/buffet with a retractable 40" HDTV (37F), to the innovative Glide and Dine™ table that easily extends and glides to the left or right for maximum dining comfort and usability (38Q), the Adventurer serves up the dining experience you desire.



38Q Glide and Dine Dining Table Extended for Four



38Q Glide and Dine Dining Table for Two





38Q Bedroom

The spacious master suite offers luxurious sleeping comfort in a king or queen bed (queen bed 32H). The Ideal Rest® Natural Reserve digital comfort control mattress includes a cotton and bamboo fiber cover panel and a duo-firmness reversible insert with Memory-Cell® (available on the 32H, 35P, and standard on the 37F, 38Q). Whether you're watching the large HDTV or reading a book, you can perfectly position yourself for maximum comfort on the powered incline bed with the simple touch of a button (37F, 38Q).



38Q Bedroom HDTV



38Q Wardrobe



38Q Bathroom





Dash

Sit behind the wheel of the Adventurer and you will appreciate the superior comfort and control. Whether it's the sideview cameras, the Radio with a Rearview Monitor System, or the swivel Ultraleather™ cab seats, you'll confidently drive in comfort with peace of mind. Cab conveniences include 12-volt powerpoints, map lights, powered MCD solar/blackout shades, and a dash workstation.



Cab Seat



Dash Workstation



MCD Solar/Blackout Shades



# Adventurer

Exterior



You'll enjoy the same level of stylish comfort outside the Adventurer as you do inside. Easy setup is ensured with a powered patio awning, 3-position jack controls, and the all-in-one service center including the QuickPort® service connection hatch. An available exterior entertainment center includes a 32" HDTV mounted on an adjustable bracket for easy viewing and relaxing afternoon outdoor living.



Available Exterior Entertainment Center



Powered Patio Awning with LED Lighting



Stylized Aluminum Wheels



Exterior Service Center



### Fiberglass Roof

The crowned, one-piece fiberglass roof is backed by a 10-year limited parts-and-labor roof skin warranty.

**Thermo-Panel® Sidewalls** By layering fiberglass and high-density block foam insulation with welded aluminum support structures, we create some of the industry's strongest, most durable and lightweight sidewalls.

**E-Coating** An electrodeposition coating helps protect critical steel components.

**Embedded Steel** Metal substructures embedded into the sidewall provide solid attachment points to keep cabinets and appliances mounted securely in place.

**Solid Framework** Aluminum extruded in our own facility to our exacting standards creates an extremely strong and solid structural framework.

### Laser-Cut Tubing

Precision laser cutters create precise joints in structural steel that are stronger and require less welding.

### Interlocking Joints

Specially engineered interlocking joints connect the floor, sidewalls and roof where competitors often rely on simple screws to bear the weight.

**SUPER  
STRUCTURE**  
BUILT TO LAST

Every coach—from our smallest Class C to our largest diesel-pusher model—is built to Winnebago Industries'® legendary SuperStructure® construction standards. It's a process developed and refined over more than 50 years of building some of the strongest, most durable coaches in the industry.



### TESTING

Before rolling out of our factories, every coach undergoes an extensive 113-point inspection. Each coach also passes a high-pressure water test that simulates rain at a rate of 50-inches per hour to check for leaks. During the design process, our computer simulations, physical testing center, and rigorous test track ensure each model is built to last.



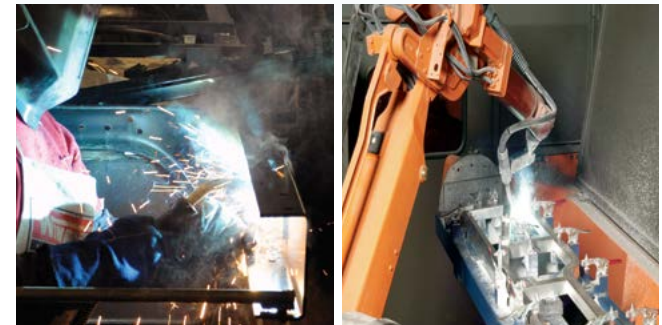
### DETAILS

At Winnebago Industries, we treat the features you can't see with the same care as the ones you can. Look in the access panels of some of our competitors' coaches and you'll see loose insulation and wires haphazardly strewn about. Winnebago Industries maintains a clean fit and finish throughout so your coach will last for the long haul.



### BUILT IN-HOUSE

We extrude our own aluminum. We rotocast our own plastic components. In fact, we manufacture most of our own parts so they are designed to fit the space, rather than fitting the space to an awkward off-the-shelf component size.



**SUPER  
STRUCTURE**  
BUILT TO LAST

Visit [BetterBuiltRVs.com](http://BetterBuiltRVs.com) to gain real insight into what goes into a Winnebago Industries motorhome.

### TAKE A TOUR

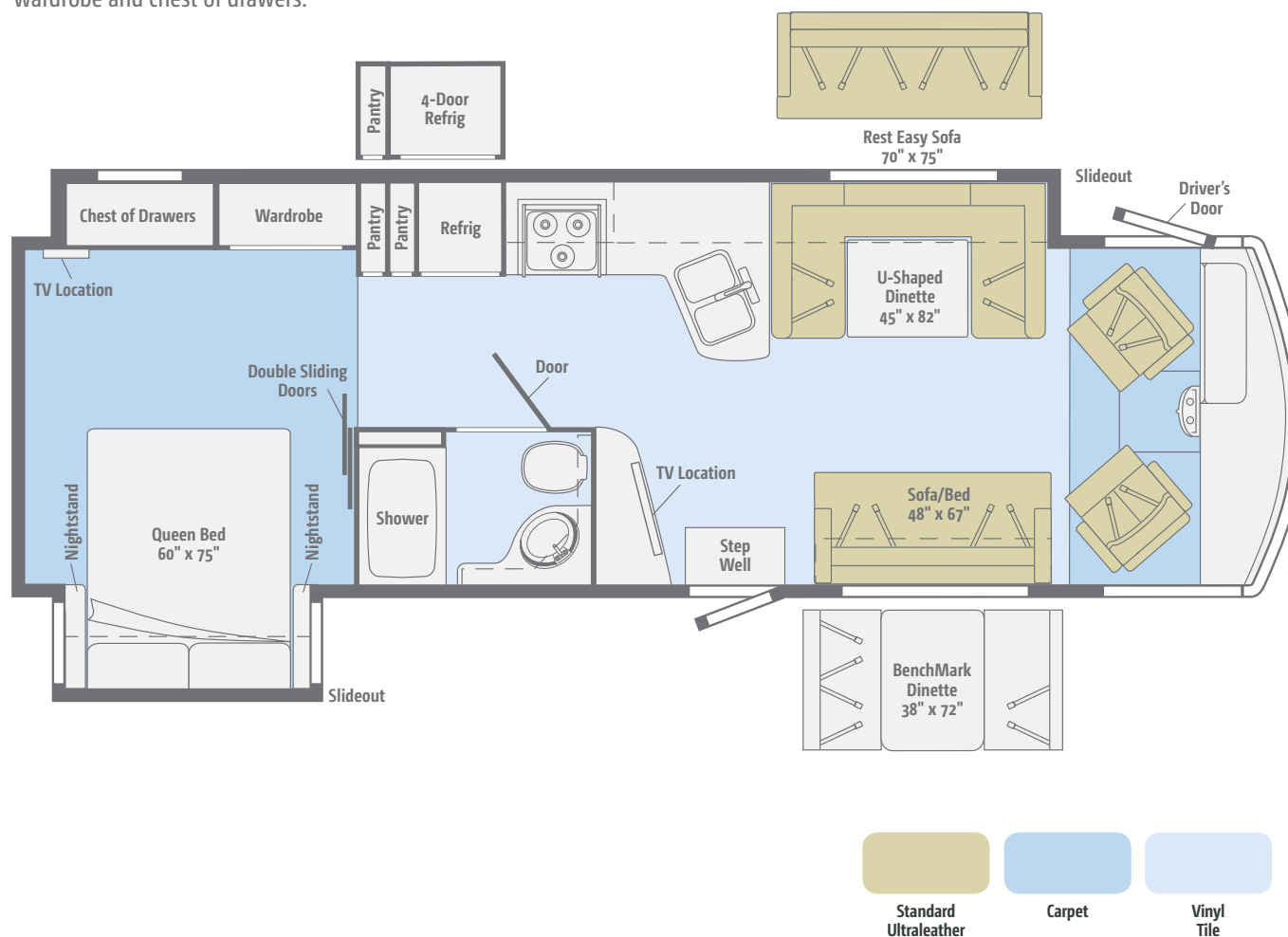
We're proud of our processes, state-of-the-art facilities, and the people who make Winnebago Industries number one. We invite you to visit our complex in Forest City, Iowa, for a first-hand look at the dedication and technology behind every motorhome we build.



Dimensions shown are for sleeping space only and may vary due to styling differences. Dashed lines denote overhead storage areas. Floorplans and specifications are also available online at [GoWinnebago.com](http://GoWinnebago.com).

### 32H

Highlights of this dual-slideout coach include an open-concept galley, a spacious mid-coach bath, a U-shaped dinette, sofa/bed, and a large wardrobe and chest of drawers.





Dimensions shown are for sleeping space only and may vary due to styling differences. Dashed lines denote overhead storage areas. Floorplans and specifications are also available online at [GoWinnebago.com](http://GoWinnebago.com).

### 35P

With three slideouts—including a full-wall slide—this impressive floorplan features a BenchMark® dinette and master bedroom with a king bed, large wardrobe, and chest of drawers.



Dimensions shown are for sleeping space only and may vary due to styling differences. Dashed lines denote overhead storage areas. Floorplans and specifications are also available online at [GoWinnebago.com](http://GoWinnebago.com).

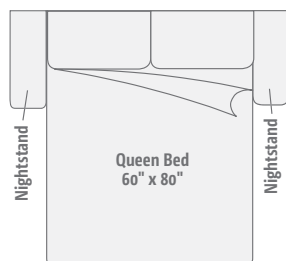
### 37F

This triple-slideout floorplan with a full-wall slide features a Rest Easy® sofa with a Euro recliner, a mid-coach guest bath, and a master bath featuring the BIG Shower.



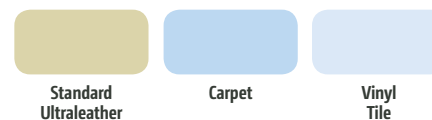
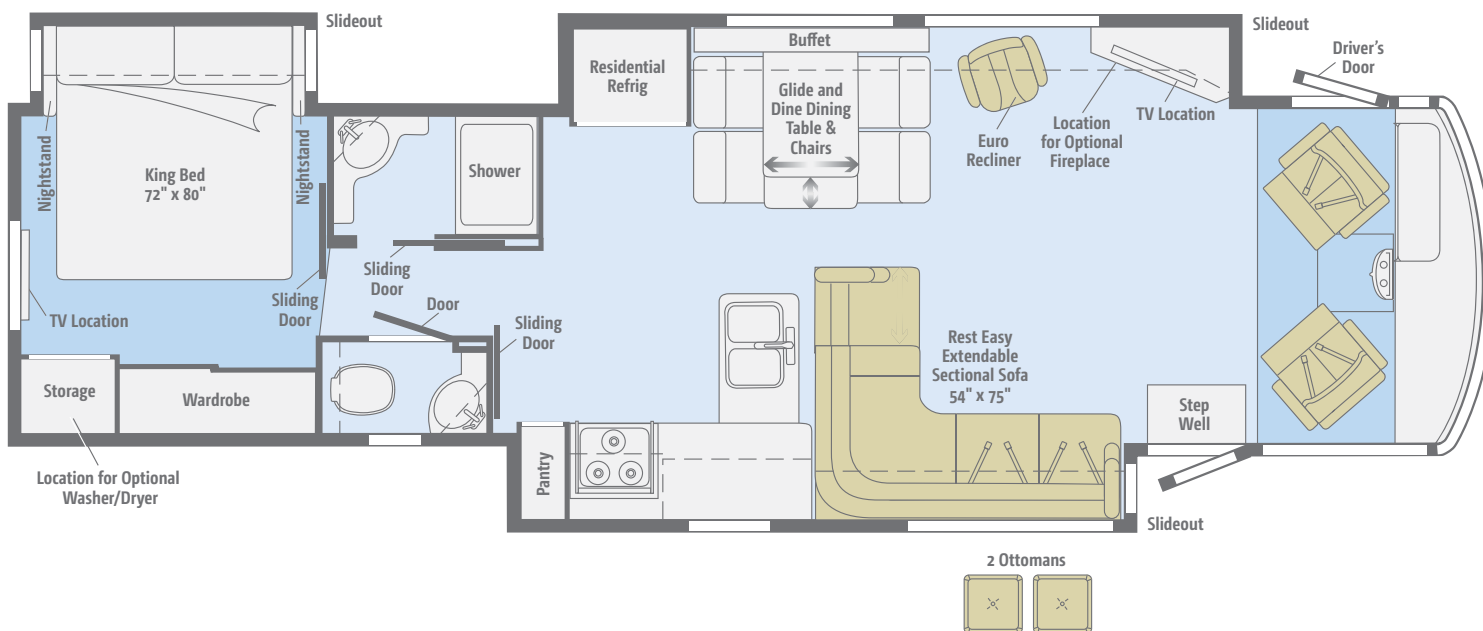


Dimensions shown are for sleeping space only and may vary due to styling differences. Dashed lines denote overhead storage areas. Floorplans and specifications are also available online at [GoWinnebago.com](http://GoWinnebago.com).



### NEW 38Q

Our newest triple-slideout floorplan welcomes you in the spacious lounge area with a Rest Easy extendable sectional sofa, a cross-aisle split bath, and your choice of a powered king or queen bed.



Choose from three fabric collections and five wood finishes, each with Satin Nickel hardware.

## Splendor



Main



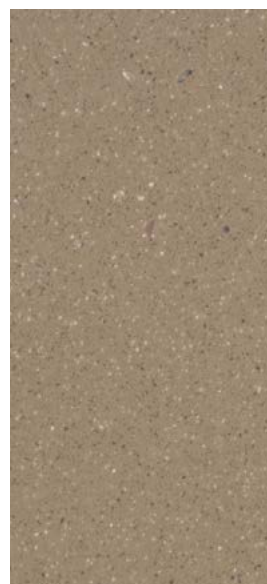
Ultraleather



Accent



Bedspread



Corian Countertop



Wall Board



Carpet



Vinyl Tile



Honey Cherry



Forest Cherry



Coffee-Glazed Vienna Maple



Coffee-Glazed Honey Cherry



Coffee-Glazed Forest Cherry



Choose from three fabric collections and five wood finishes, each with Satin Nickel hardware.

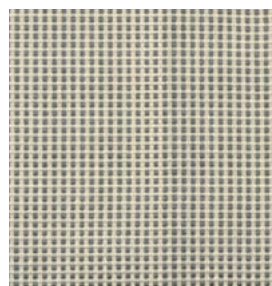
### Silver Birch



Main



Ultraleather



Accent



Bedspread



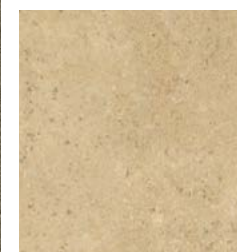
Corian Countertop



Wall Board



Carpet



Vinyl Tile



Honey Cherry



Forest Cherry



Coffee-Glazed Vienna Maple



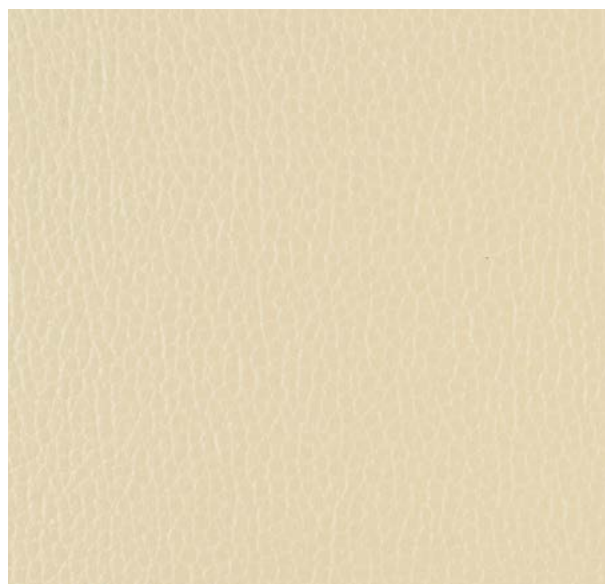
Coffee-Glazed Honey Cherry



Coffee-Glazed Forest Cherry

Choose from three fabric collections and five wood finishes, each with Satin Nickel hardware.

## Spectrum



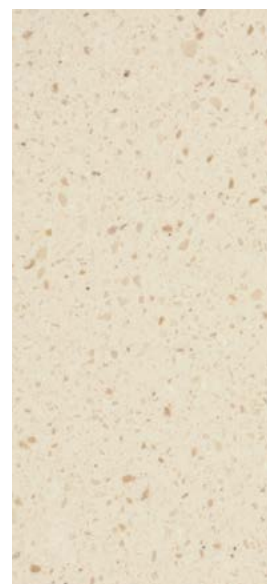
Ultraleather



Accent



Bedspread



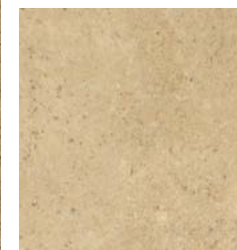
Corian Countertop



Wall Board



Carpet



Vinyl Tile



Honey Cherry



Forest Cherry



Coffee-Glazed Vienna Maple



Coffee-Glazed Honey Cherry



Coffee-Glazed Forest Cherry



# Adventurer

Paint



Full-body paint comes standard in the style of your choice.



**Vermillion**  
FULL-BODY PAINT



**Sapphire**  
FULL-BODY PAINT



**Buckskin**  
FULL-BODY PAINT



**Black Walnut**  
FULL-BODY PAINT

## Weights & Measures

	32H	35P	37F	38Q
Length	33'3"	35'9"	37'9"	39'1"
Exterior Height <sup>1</sup>	12'8"	12'8"	12'8"	12'8"
Exterior Width <sup>2</sup>	8'5.5"	8'5.5"	8'5.5"	8'5.5"
Exterior Storage <sup>3</sup> (cu. ft.)	112.3	125.5	121.7	121.9
Awning Length	17'	17'	18'	14'
Interior Height	7'	7'	7'	7'
Interior Width	8'0.5"	8'0.5"	8'0.5"	8'0.5"
Freshwater Tank Capacity <sup>4</sup> (gal.)	78	78	78	75
Water Heater Capacity (gal.)	10	10	10	10
Holding Tank Capacity - Black/Gray <sup>4</sup> (gal.)	43/47	43/57	52/71	75/79
LP Capacity <sup>5</sup> (gal.)	23	28	28	28
Fuel Capacity (gal.)	80	80	80	80
GCWR <sup>6</sup> (lbs.)	26,000 <sup>A</sup>	26,000 <sup>A</sup> /30,000 <sup>B</sup>	30,000 <sup>B</sup>	30,000 <sup>C</sup>
GVWR (lbs.)	22,000 <sup>A</sup>	22,000 <sup>A</sup> /24,000 <sup>B</sup>	24,000 <sup>B</sup>	26,000 <sup>C</sup>
GAWR - Front (lbs.)	8,000 <sup>A</sup>	8,000 <sup>A</sup> /9,000 <sup>B</sup>	9,000 <sup>B</sup>	9,000 <sup>C</sup>
GAWR - Rear (lbs.)	15,000 <sup>A</sup>	15,000 <sup>A</sup> /15,500 <sup>B</sup>	15,500 <sup>B</sup>	17,500 <sup>C</sup>
Wheelbase	220"	228"	248"	248"

A Ford F53 22,000-lb. Chassis w/22.5" tires B Ford F53 24,000-lb. Chassis w/22.5" tires C Ford F53 26,000-lb. Chassis w/22.5" tires

## Chassis

**Ford® F53 22,000-lb. Chassis** 362-hp 6.8L V10 SEFI Triton® engine, TorqShift™ 5-speed automatic overdrive transmission w/tow/haul, Hydro-Max brakes w/ABS, 175-amp. alternator (32H, 35P)

**Ford F53 24,000-lb. Chassis** (37F)

**Ford F53 26,000-lb. Chassis** (38Q)

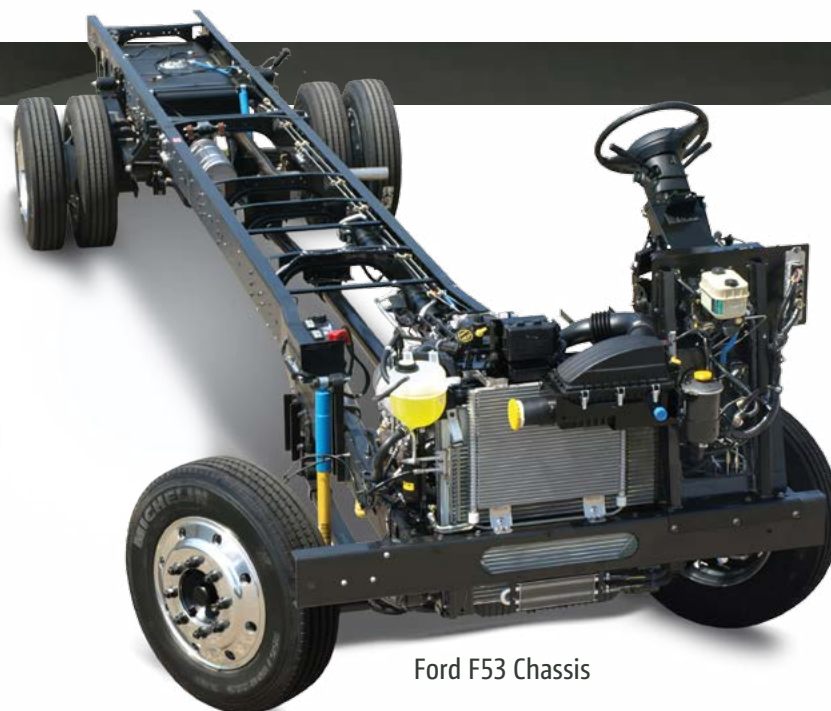
**Trailer Hitch**<sup>6</sup> 5,000-lb. drawbar/500-lb. maximum vertical tongue weight w/7-pin connector

**Stylized aluminum wheels**

**Hydraulic leveling jacks** w/3-position controls

### OPTIONAL EQUIPMENT

Ford F53 24,000-lb. Chassis (35P)



Ford F53 Chassis

## Cab Conveniences

**Radio/Rearview Monitor System** 6" LCD color touch screen, remote, iPod®/MP3 input, rear color camera

**Chassis/house battery radio power switch**

**Cab seats** adjustable armrests, lumbar support, multi-adjustable recline and swivel/slide

**6-way power-assist driver seat**

**3-point seat belts**

**Defroster fans**

**Cab sound control package**

**Cruise control**

**12-volt powerpoints**

**Map lights**

**Power steering w/tilt wheel**

**Dash workstation**

**C.B. wire prep kit**

**Power mirrors w/defrost and sideview cameras**

**MCD solar/blackout powered front shade, privacy curtain for driver and passenger windows**

**Sideview video color camera system**

**Light-filtering roller shades for driver and passenger windows**

### OPTIONAL EQUIPMENT

**Infotainment Center w/Rand McNally RV GPS** 6" touch screen color monitor w/split screen function, Rand McNally RV GPS safe and easy routing, amenities and tools, trips and content, turn-by-turn voice guidance, AM/FM radio w/CD/DVD player, handheld remote, SiriusXM™ (subscription not included), compass, outside temperature, iPod/iPhone® audio integration, Bluetooth™ color rearview camera

**Passenger seat w/footrest** (35P, 37F, 38Q)

## Interior

**Dining table/buffet/chairs w/retractable 40" HDTV** (37F)

**32" HDTV** (32H)

**40" HDTV** (35P)

**46" HDTV** (38Q)

**Digital HDTV amplified antenna system**

**Blu-Ray™ Home Theater Sound System** amplifier, CD/DVD player, iPhone/iPod dock w/video, receiver, 5 speakers, and subwoofer

**OnePlace® systems center**

**Satellite system ready, including bedroom TV**

**MCD solar/blackout roller shades** (MCD blackout roller shade galley 38Q)

**Tinted, dual-glazed, thermo-insulated windows**



LED ceiling and accent lighting  
Soft vinyl ceilings  
Key-activated slideroom master lock switch  
HDMI 4X4 Matrix central video selection system  
Powered ventilator fan (galley)  
Powered roof vent (bath)  
Washer/dryer prep (35P, 37F, 38Q)

### OPTIONAL EQUIPMENT

Winegard® in-motion TV antenna system  
Winegard Trav'ler® automatic HDTV antenna system  
Stackable washer/dryer (35P, 37F, 38Q)  
Vinyl tile throughout (slideouts and cab are carpeted)  
Contour tinted, dual-glazed, thermo-insulated windows  
Electric fireplace (38Q)

## Galley

Corian® solid-surface countertop, flip-up extension, and backsplash  
Microwave/convection oven w/range fan  
3-burner range top w/storage below  
Corian sink and range covers  
2-door refrigerator/freezer (32H, 35P)  
4-door refrigerator/freezer w/icemaker (37F)  
French door residential refrigerator, counter-depth, stainless steel, interior water dispenser, icemaker and glide-out bottom freezer drawer (38Q)  
Cold water filtration system

### OPTIONAL EQUIPMENT

3-burner range w/oven  
4-door refrigerator/freezer w/icemaker (32H, 35P)  
French door residential refrigerator, counter-depth, stainless steel, interior water dispenser, icemaker and glide-out bottom freezer drawer (37F) (also includes 4 AGM batteries)

## Bath

Textured glass shower door  
Flexible showerhead  
Corian countertop  
Skylight (32H, 35P)  
Water pump switch(es)

## Bedroom

Powered king bed w/Ideal Rest® Natural Reserve digital comfort control mattress w/remotes (37F, 38Q)  
King bed w/innerspring mattress and access to storage below (35P)  
Queen bed w/innerspring mattress and storage below (32H)  
24" HDTV (32H)  
28" HDTV (37F)  
32" HDTV (35P, 38Q)  
Bedsread, pillow shams and pillows  
Ceiling Fan

### OPTIONAL EQUIPMENT

Queen Ideal Rest Natural Reserve digital comfort control mattress w/remotes (32H, 35P)  
King Ideal Rest Natural Reserve digital comfort control mattress w/remotes (35P)  
Powered Queen bed w/Ideal Rest Natural Reserve digital comfort control mattress w/remote and storage below (37F, 38Q)  
Queen bed w/innerspring mattress and storage below (35P)

## Exterior

Driver's side service light  
TriMark® KeyOne™ lock system  
Lower front protective mask  
Porch light  
Automatic entrance steps  
Powered entrance awning (38Q)  
Powered patio awning w/LED lighting, metal wrap and WeatherMAX™ fabric  
Ladder  
Front and rear mud flaps  
Lighted storage compartments (in select compartments)

### OPTIONAL EQUIPMENT

Exterior Entertainment Center 32" HDTV mounted to adjustable bracket, stereo w/remote

## Heating & Cooling System

35,000 BTU low-profile furnace (32H)  
40,000 BTU low-profile furnace (35P, 37F, 38Q)  
TrueAir® Maximum Comfort A/C two 13,500 BTU, low-profile roof air conditioners w/heat pumps

## Electrical System

AC/DC distribution system  
55-amp. converter/charger  
Service Center cable TV input, 50-amp. power cord, QuickPort® service connection hatch, portable satellite dish hookup  
Cummins Onan® Energy Command™ automatic generator start system  
Exterior AC duplex receptacle  
Exterior antenna jack  
5,500-watt Cummins Onan Marquis Gold™ generator  
1,000-watt inverter w/remote panel (32H, 35P)  
2,000-watt inverter/charger (37F, 38Q)  
PowerLine® Energy Management System  
Auxiliary start circuit  
Two deep-cycle Group 31 batteries (NA 38Q)  
Four deep-cycle Marine/RV batteries (38Q)  
Battery disconnect systems (coach and chassis)  
Automatic dual-battery charge control  
Generator/shoreline automatic changeover switch

### OPTIONAL EQUIPMENT

100-watt solar panel battery charger

## Plumbing System

LPG accessory connection (patio area)  
Service Center QuickPort service connection hatch, exterior wash station w/pump switch, pressurized city water hookup w/diverter valve, drainage valves, 10' sewer hose, black tank flushing system  
Permanent-mount LP tank w/gauge  
TrueLevel™ holding-tank monitoring system  
On-demand water pump  
Heated holding tank compartment  
Winterization Package water heater bypass valve and siphon tube  
10-gallon water heater, 110 V/LP gas w/motoraid and auxiliary auto heater  
Gravity water tank fill w/lockable door

## Safety

Child seat tether anchor (dinette) (NA U-shaped dinette)  
LP, smoke and carbon monoxide detectors  
10 BC fire extinguisher  
Ground fault interrupter  
Fog lamps  
High-mount brake lamps

## Warranty<sup>7</sup>

12-month/15,000-mile basic limited warranty<sup>8</sup>

36-month/36,000-mile limited warranty on structure<sup>8</sup>

10-year limited parts-and-labor warranty on roof skin<sup>8</sup>

- The height of each model is measured to the top of the tallest standard feature and is based on the curb weight of a typically equipped unit. The actual height of your vehicle may vary by several inches depending on chassis or equipment variations. Please contact your dealer for further information.
- Floorplans feature a wide-body design – over 96" In making your purchase decision, you should be aware that some states restrict access on some or all state roads to 96" in body width. Before making your purchase decision, you should confirm the road usage laws in the states of interest to you.
- The load capacity of your motorhome is designated by weight, not by volume, so you cannot necessarily use all available space when loading your motorhome.
- Capacities are based on measurements prior to tank installation. Slight capacity variations can result due to installation applications.
- Capacities shown are tank manufacturer's listed water capacity (W.C.). Actual filled LP capacity is 80% of listing due to overfilling prevention device on tank.
- Actual towing capacity is dependent on your particular loading and towing circumstances, which includes the GVWR, GAWR, and GCWR as well as adequate trailer brakes. Please refer to the Operator's Manual of your vehicle for further towing information.
- See separate chassis warranty.
- See your dealer for complete warranty information.

NA Not Available

Not all items available in combination. See dealer for details.

Winnebago Industries® continuing program of product improvement makes specifications, equipment, model availability, and prices subject to change without notice. Published content reflects the most current product information at time of printing. Please consult your dealer for individual vehicle features and specifications.

# GoWinnebago.com Has All The Answers

Visit [GoWinnebago.com](http://GoWinnebago.com) on your computer, smartphone or tablet for the latest product information and updates.



## **PREFERRED CARE PROGRAM**

We back our motorhomes with best-in-class support both before *and* after the sale:

- 12-month/15,000-mile basic limited warranty
- 36-month/36,000-mile limited warranty on structure
- 10-year limited parts-and-labor warranty on roof skin
- Complimentary 24-hour roadside assistance program



**TRIP**Saver  
FAST TRACK PARTS

- TripSaver® Fast Track Parts guarantees that in-stock warranty parts ship directly to your dealer within 24 hours
- National dealer service network



## Join the Club, Join the Fun

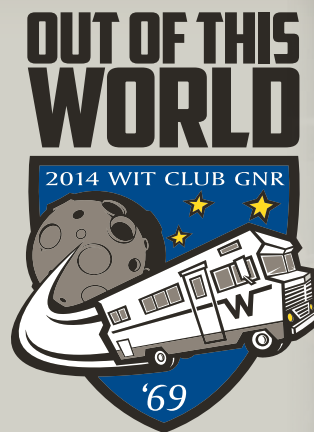
As a Winnebago motorhome owner, you are invited to join the WIT Club. It's a great way to take full advantage of your new coach and meet fun-loving WIT Club members from across the country who make motorhome adventures a way of life.



### Members enjoy:

- Caravans and rallies
- Newsletters
- Local and state group activities
- RV travel benefits

See more at [WITclub.com](http://WITclub.com)



### Grand National Rally

In 1969, two things happened: Neil Armstrong took mankind's first steps on the moon, and Winnebago Industries' WIT Club launched its first Grand National Rally in Forest City, Iowa. Every year since then, thousands of rally-goers connect with old friends to enjoy concerts, tours, activities, and more. Blast off for an adventurous week in July to celebrate 45 years of interstate land roving at the 2014 "Out of This World" Grand National Rally. It's a mission you'll never forget!